



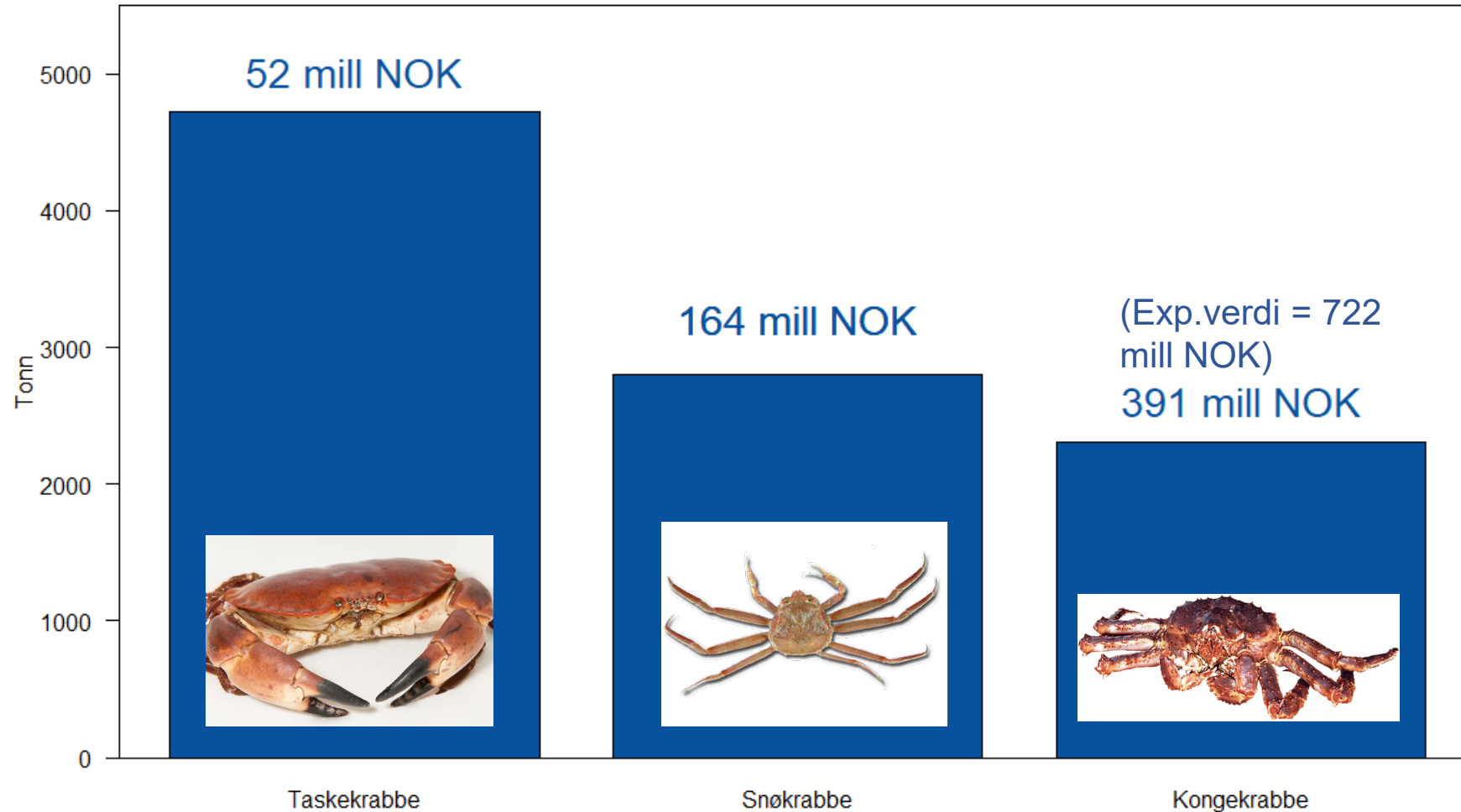
Status for kongekrabbe og veien videre

Jan H. Sundet



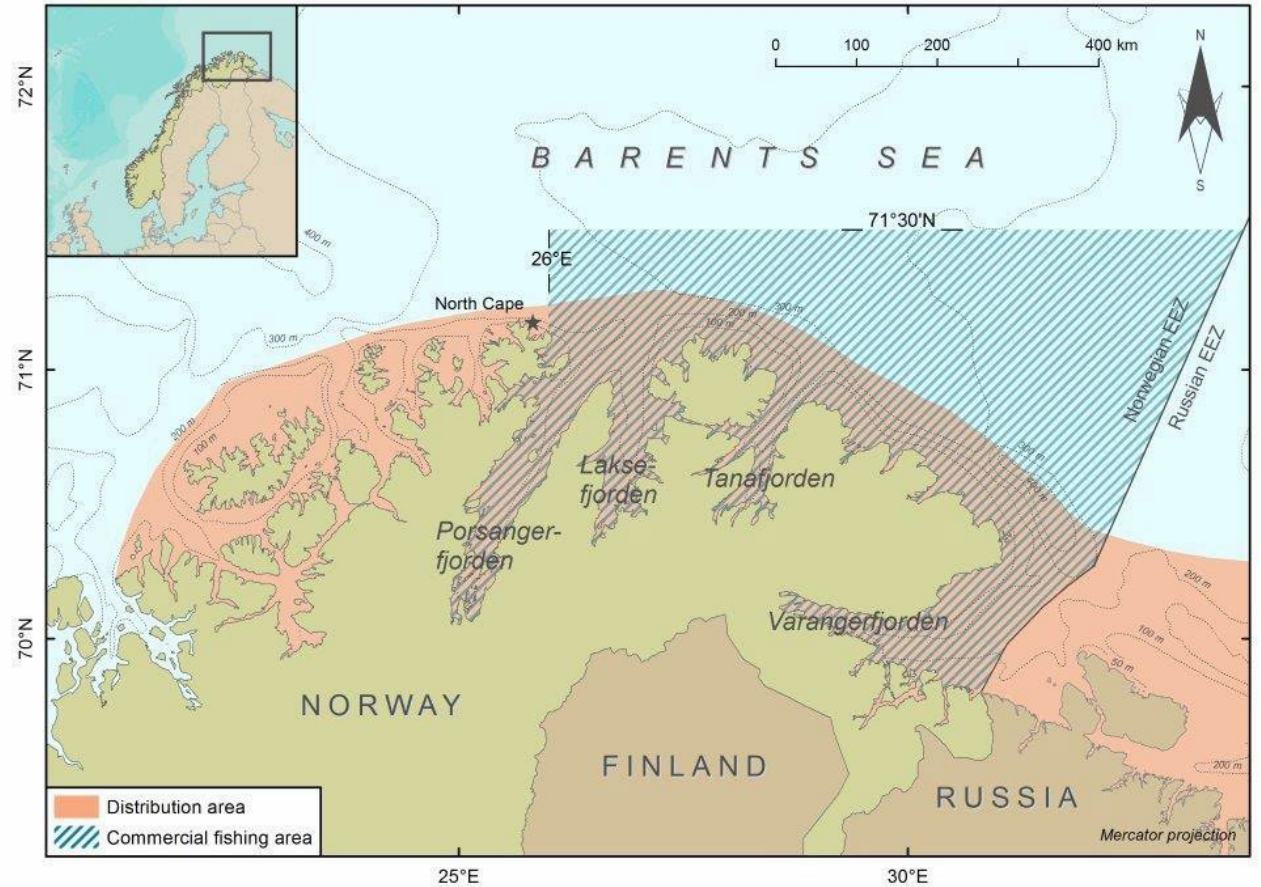
Norsk krabbefiske

2018



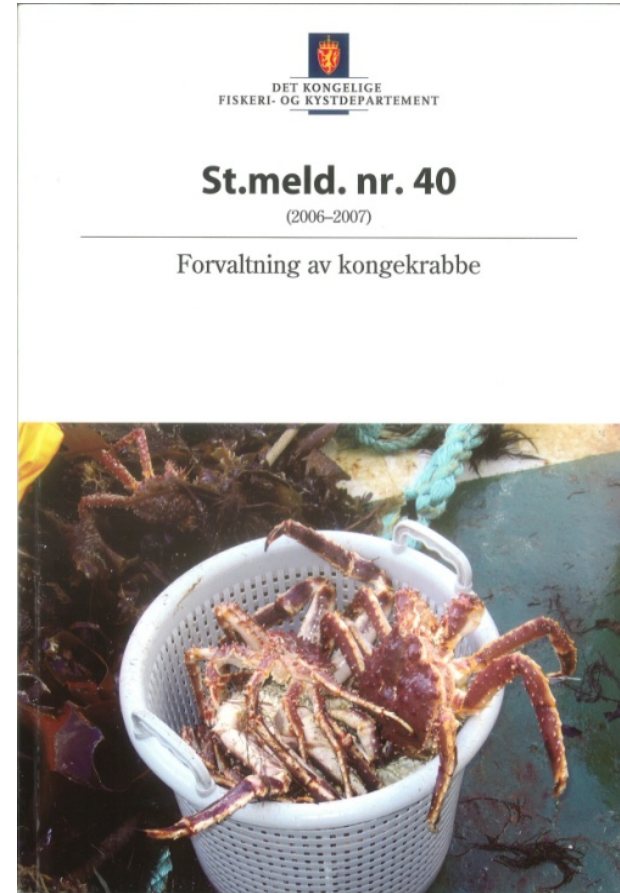
KK - forvaltning

- TAC
- Fartøykvote - differensiert
- MLS : Hanner og hunner > 130 mm CI
- Ingen sesong
- Fartøystørrelse < 21 m
- Max antall teiner – 30
- Limit røkting: 7 days
- AIS – Obligatorisk
- Samleteiner - tillatt
- Elektronisk fangstrapportering



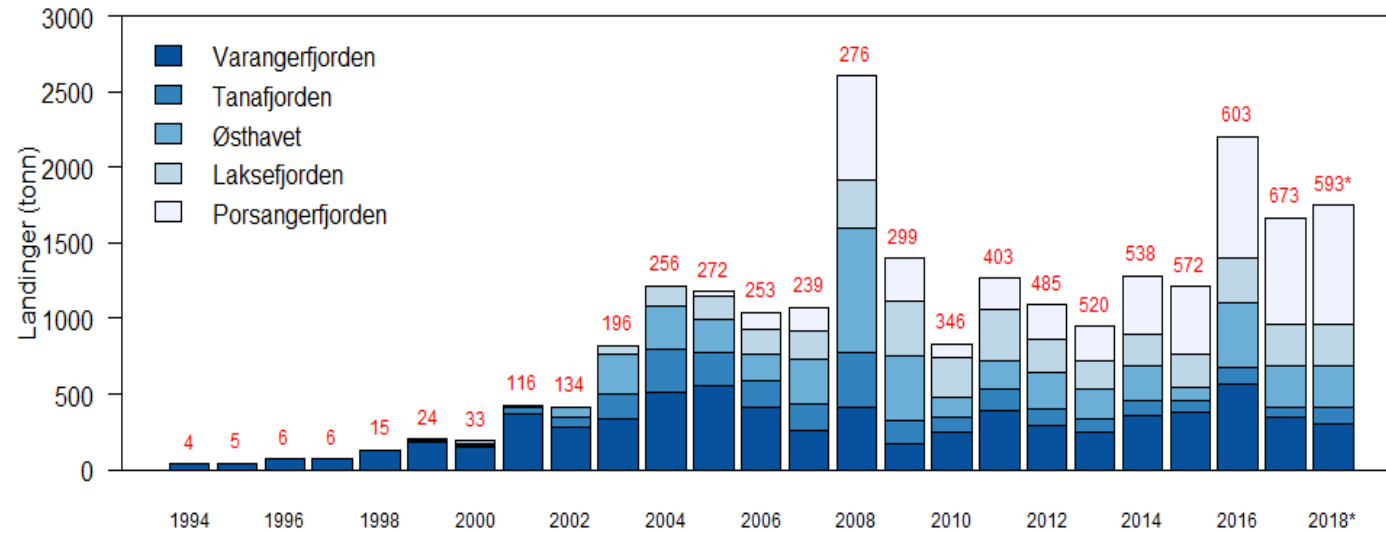
Vårt oppdrag

- Gi råd om bestand og fangstkvoter
- Overvåke spredningen vest for 26° E
- Studere/overvåke effekter på økosystemet.

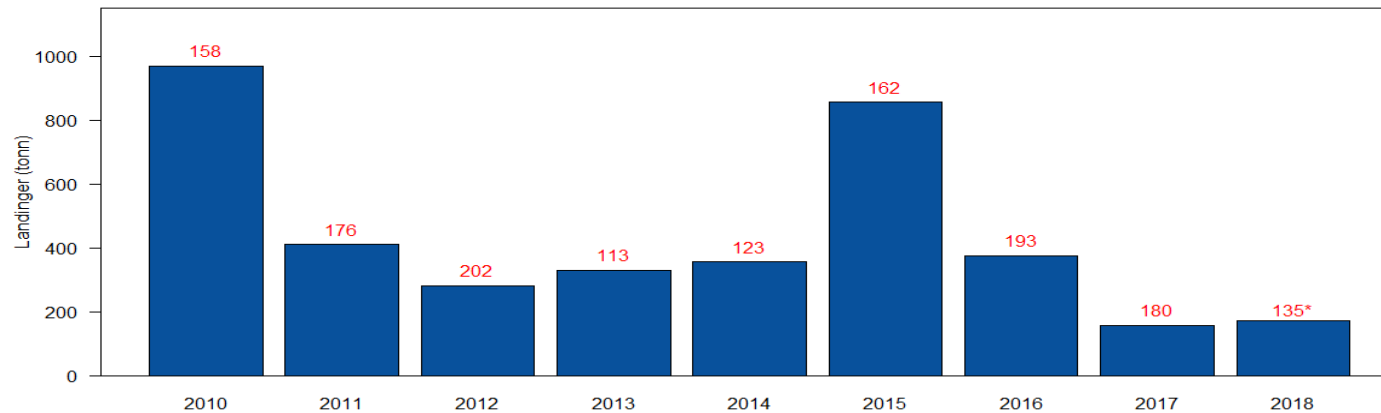


Landinger

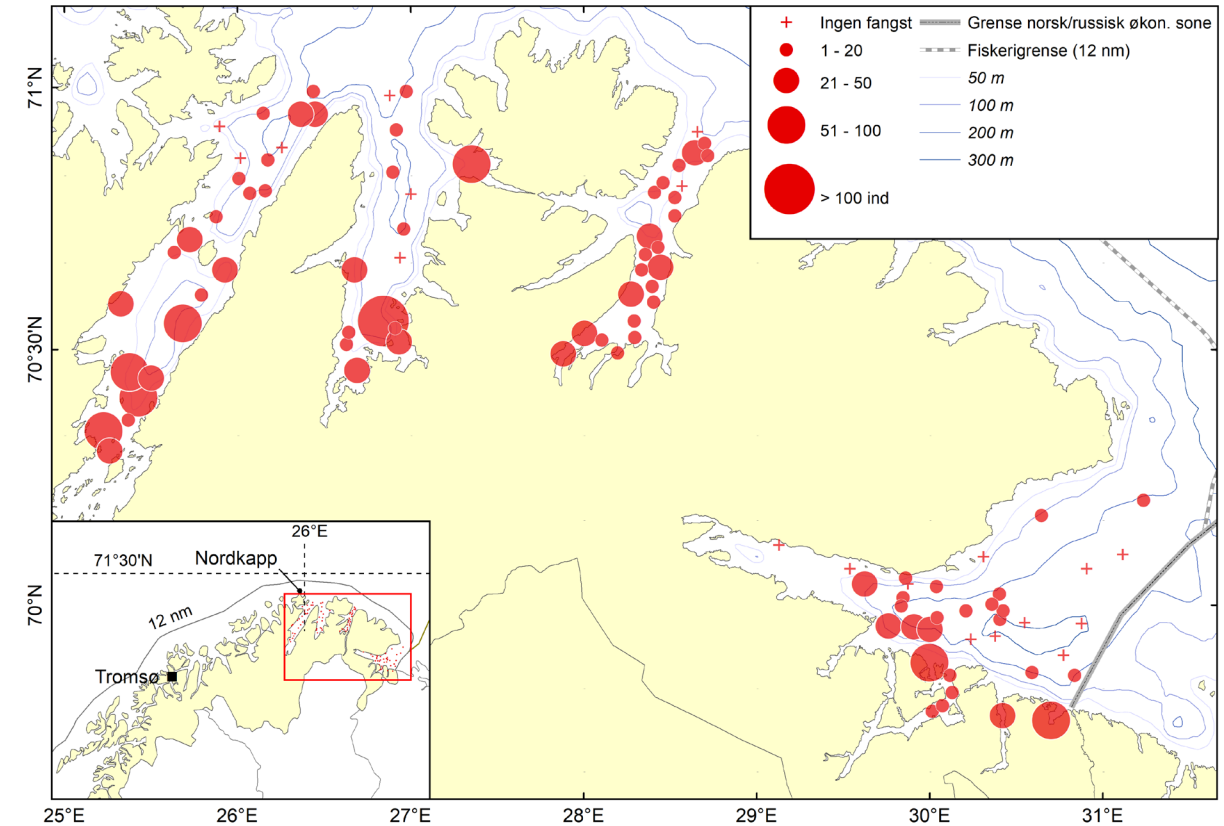
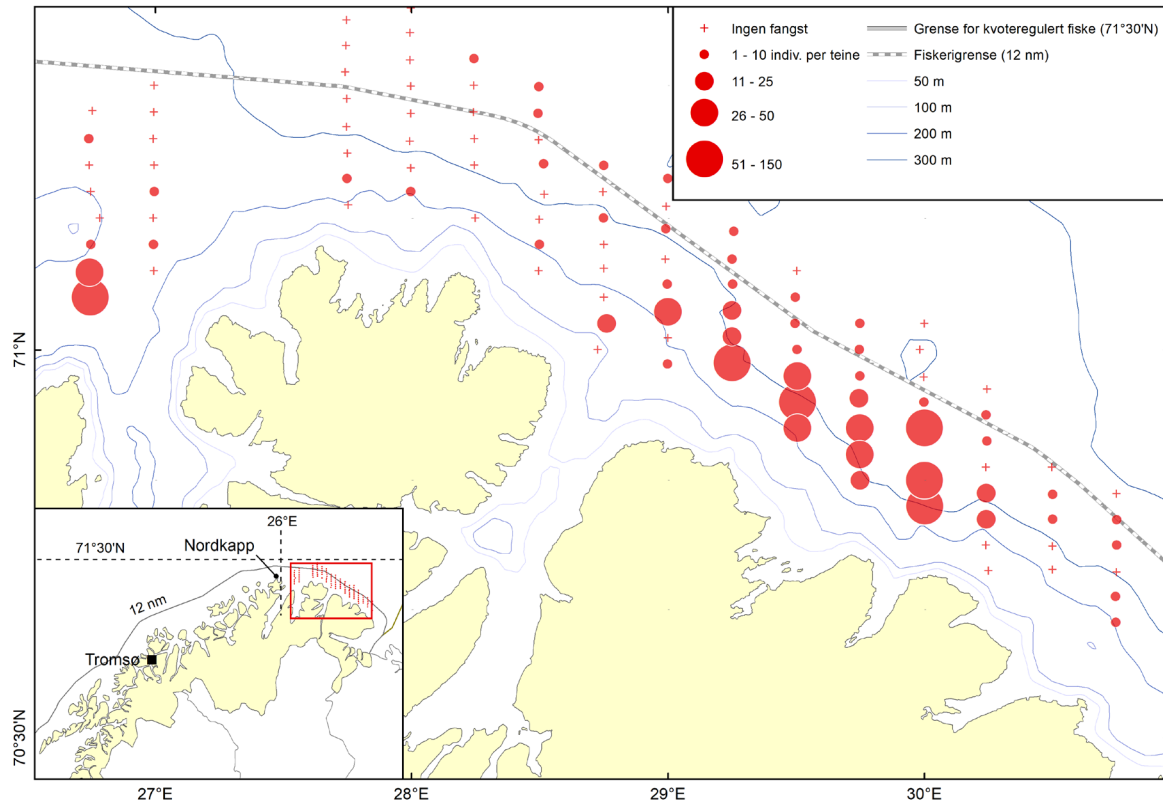
Kvotekområde



Friområde

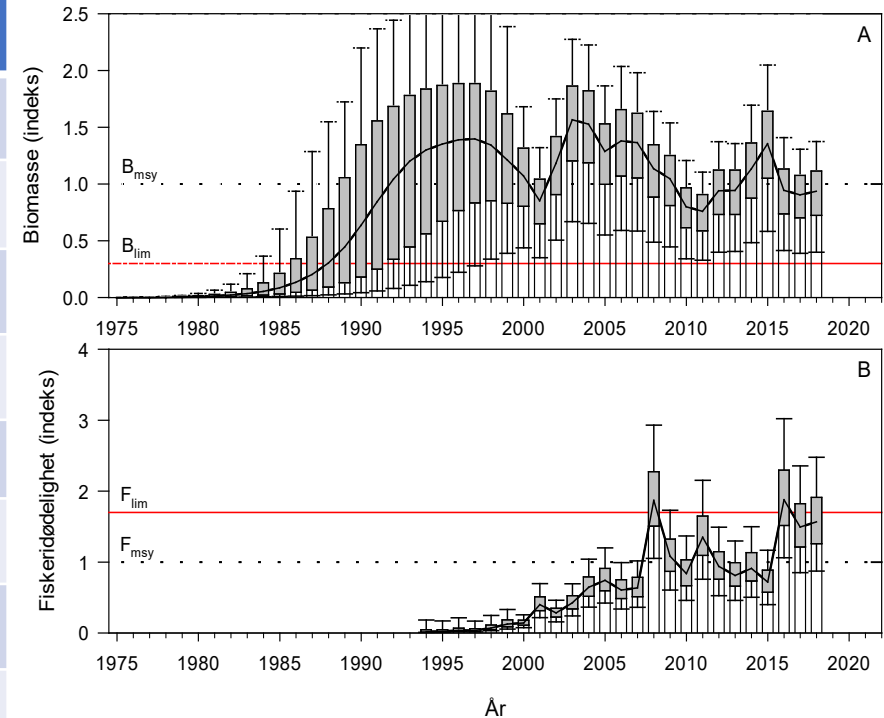


Datainnsamling - bestandsvurderinger



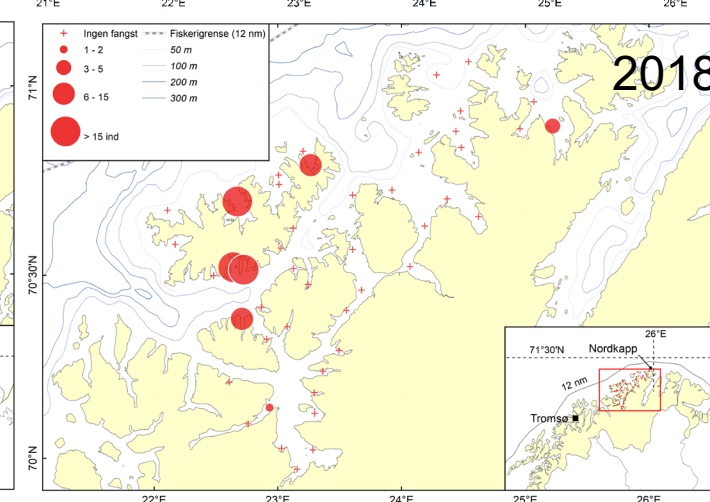
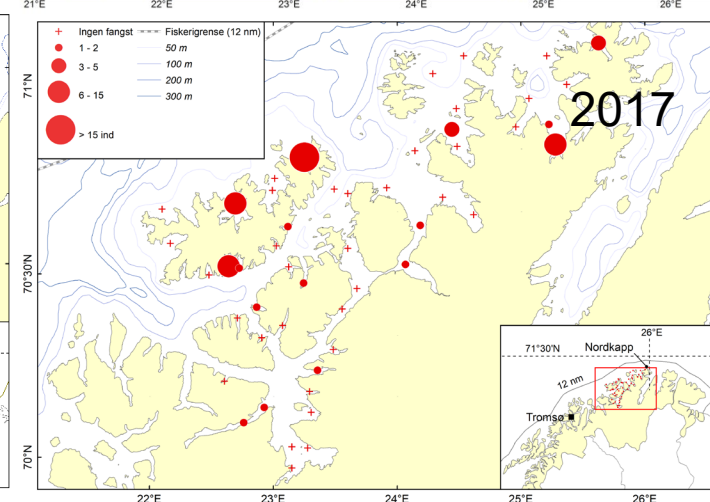
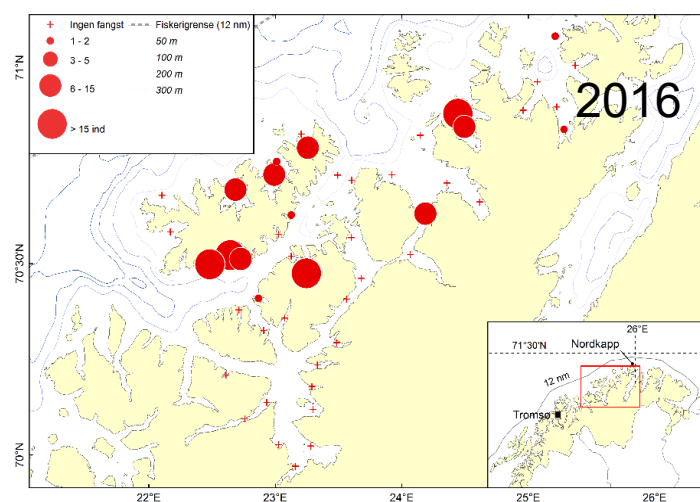
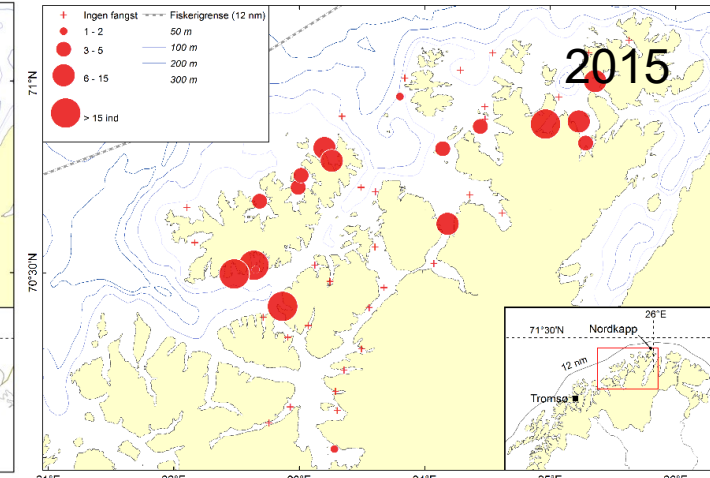
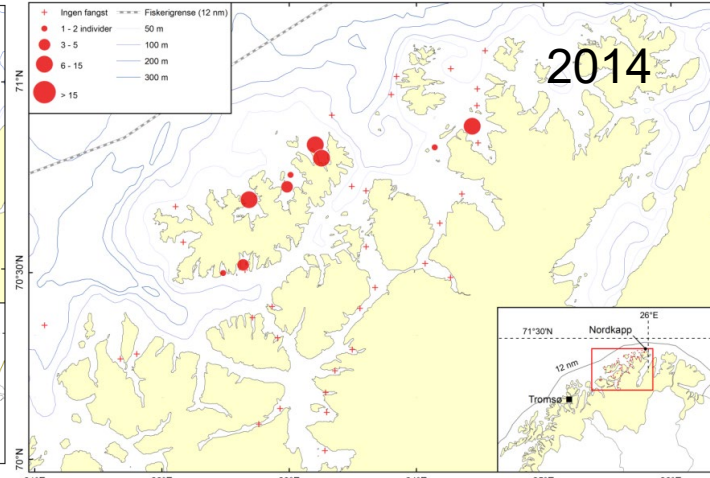
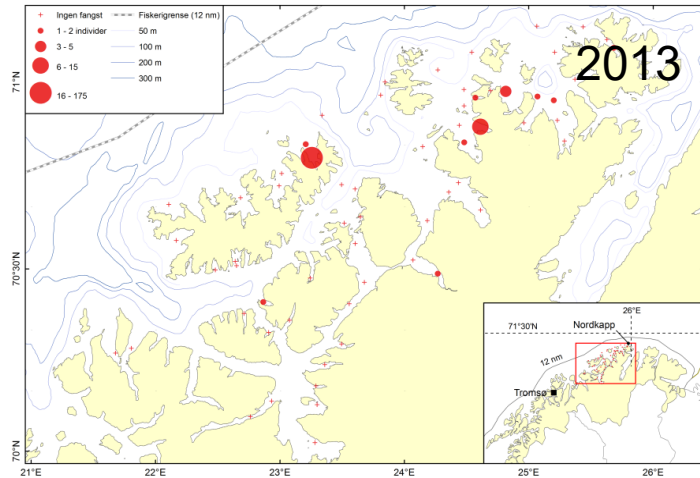
Rådgivning og kvote

Catch options 2019 (tons)	1000	1250	1500	1750	2000	2250
Risk stock < B_{lim}	2 %	3 %	3 %	3 %	5 %	8 %
Risk stock < B_{msy}	60 %	69 %	73 %	79 %	86 %	89 %
Risk $F > F_{msy}$	41 %	70 %	85 %	92 %	97 %	98 %
Risk $F > F_{lim}$	5 %	23 %	40 %	62 %	80 %	88 %
Risk stock2019 < stock2018	50 %	63 %	64 %	72 %	82 %	87 %
Stock size (B/B_{msy}), median	0.91	0.82	0.80	0.73	0.66	0.61
F (F/F_{msy}), median	0.91	1.27	1.53	1.94	2.45	3.00
Productivity (% av MSY)	99 %	97 %	96 %	93 %	88 %	85 %

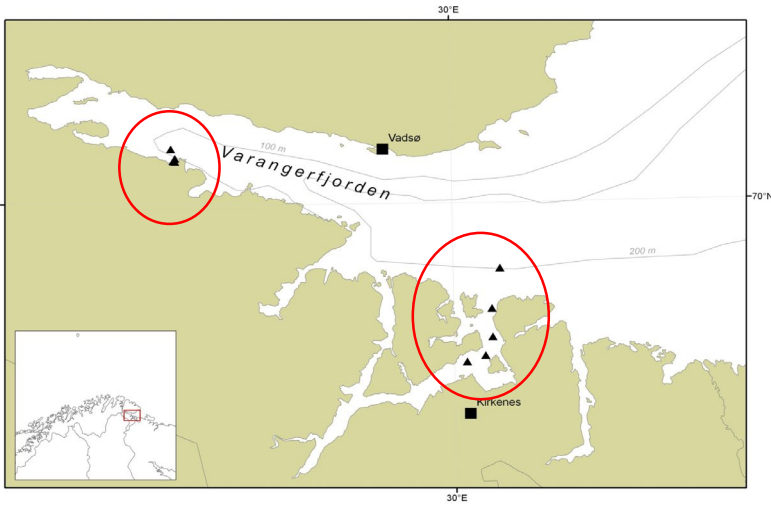


Råd: 1400 tonn
Kvote: 1400 tonn

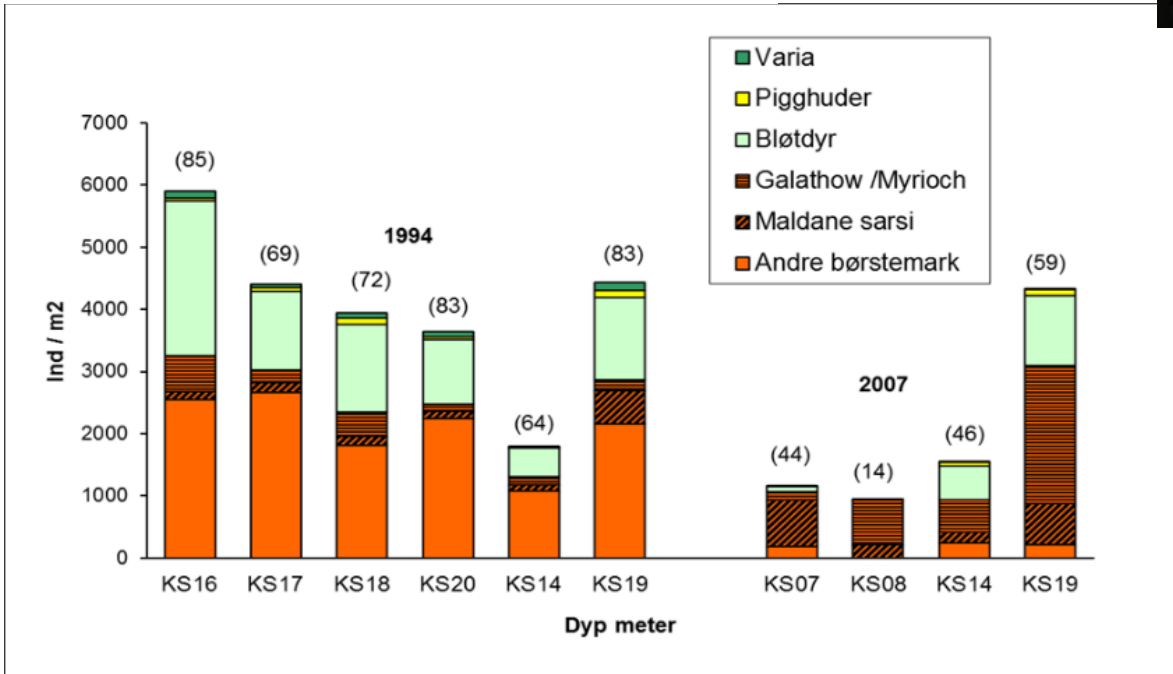
Spredning vest av Nordkapp



Økosystemeffekter



Undersøkelser i
Varanger- og
Porsangerfjorden

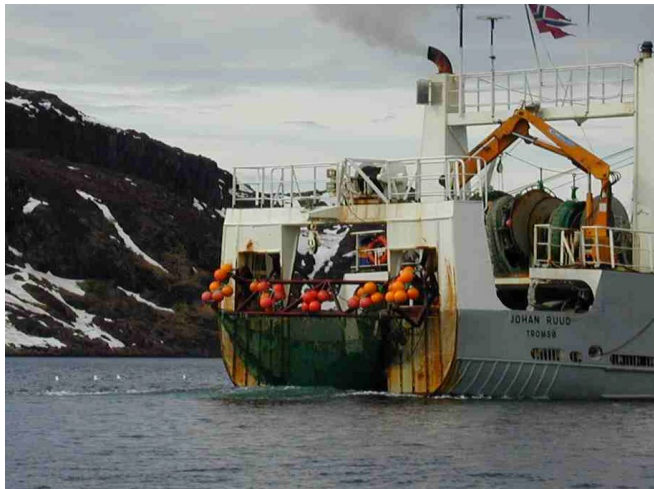


Veien videre

Svakheter i datainnsamling

Krabbetrål:

- Usikker q
- Beste fall en indeks
- Trenger lang tidsserie
- Usikker demografisk sammensetning

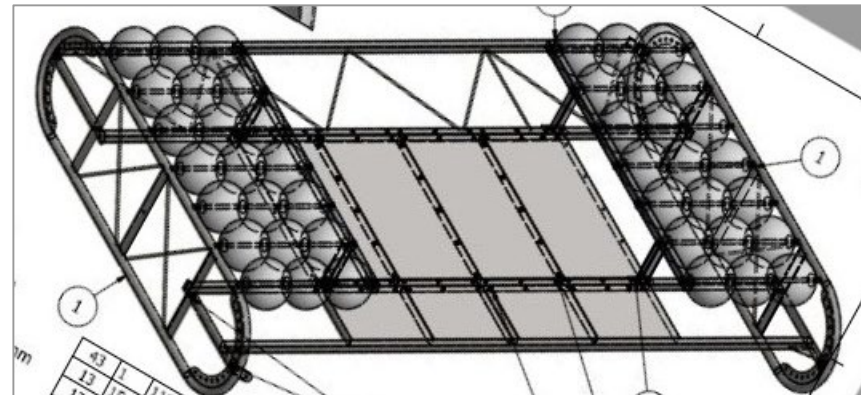
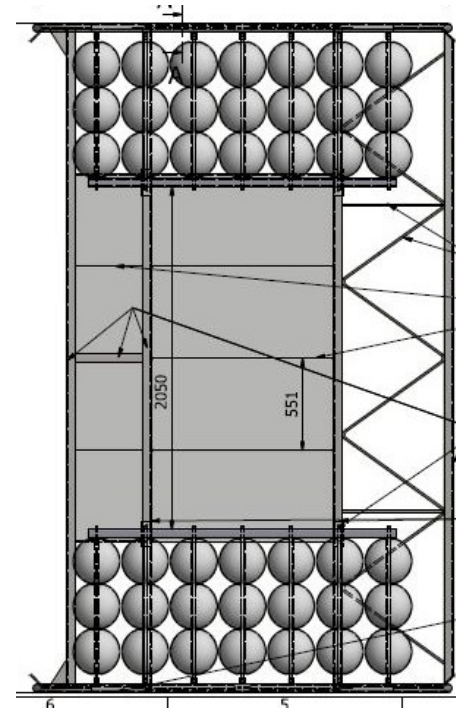
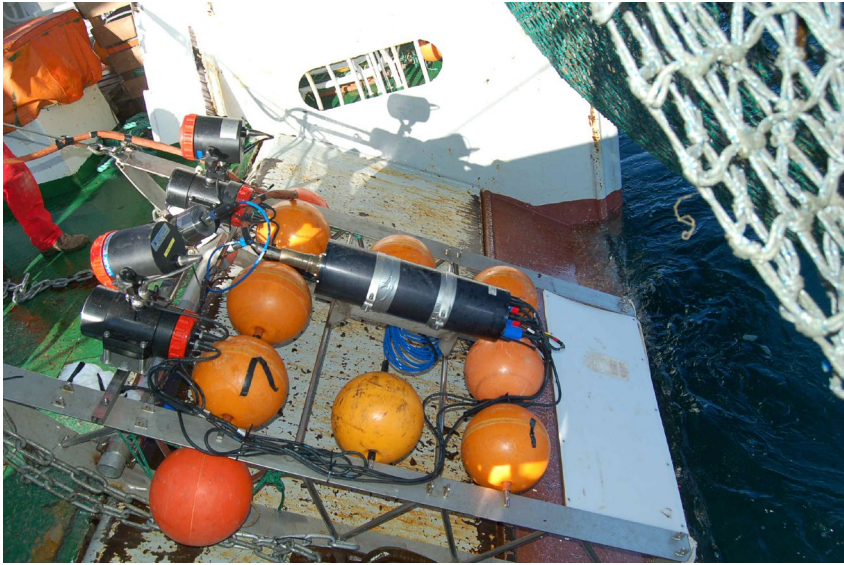


Teiner:

- Svært usikker datainnsamling
- Stor vilkårlighet
- Operativt – krevende
- Ikke data på demografi
- Indeks ???



Landinger



A wide-angle photograph of a sunset over a large body of water. The sun is low on the horizon, creating a bright orange and yellow glow that reflects on the water's surface. The sky is filled with dark, dramatic clouds, some of which are illuminated from below by the setting sun. The water in the foreground is dark blue with small, rhythmic waves. In the distance, a low, dark landmass is visible on the horizon.

Takk for oppmerksomheten!