

SJØMIL – the sections Svinøy-NW and Gimsøy-NW

The standard sections Svinøy-NW and Gimsøy-NW are located in the eastern part of the Norwegian Sea (Figure 1). The sections cover the northward flow of coastal and Atlantic water in Norwegian Sea. Recorded parameters are temperature and salinity. The sections have been sampled annually since 1950 (Svinøy-NW) and 1963 (Gimsøy-NW), and 2-5 times each year since 1977.

To provide time series of the temperature and salinity in the Atlantic inflow, average temperatures between 50 and 200 m in the area where the main Atlantic inflow take place is calculated (Blindheim and Loeng, 1981). For the Svinøy-NW section it is the area between $2^{\circ} 52' E$ and $3^{\circ} 24' E$, and for the Gimsøy-NW section the area between $11^{\circ} 57' E$ and $12^{\circ} 38' E$ is used.

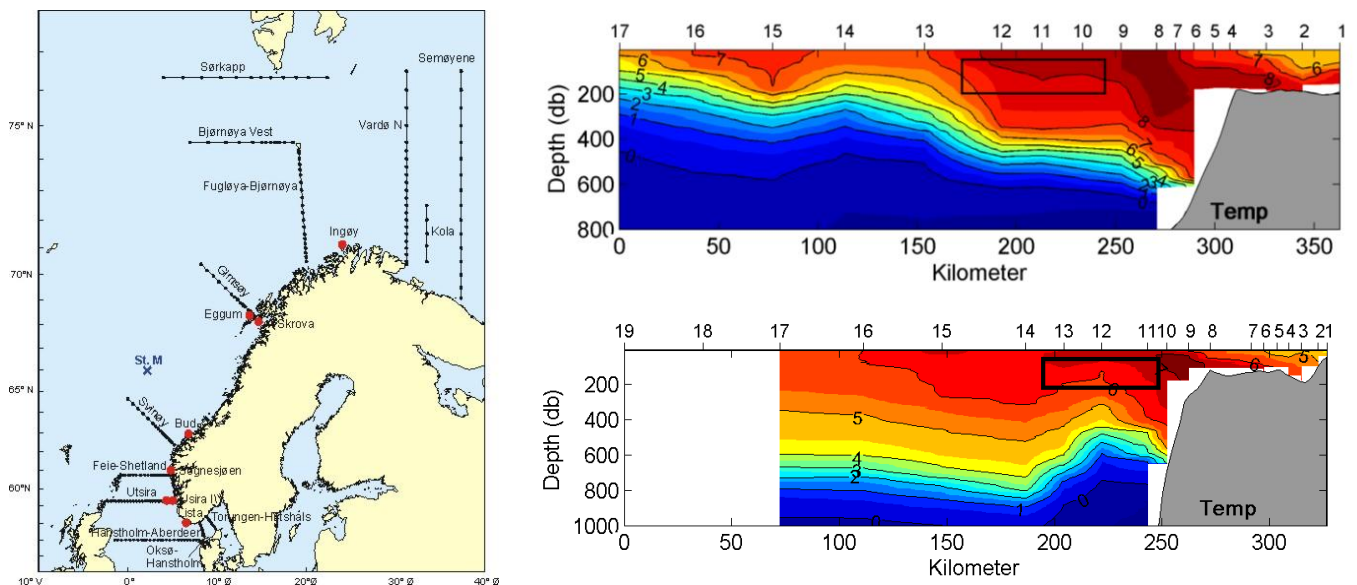


Figure 1. The left panel shows the location of the standard sections Svinøy-NW and Gimsøy-NW. The right panels show examples of temperature sampled at the Svinøy (upper) and Gimsøy (lower) sections, and the area within the section from where average values are found.

Reference:

Blindheim, J. and Loeng, H. 1981. On the variability of Atlantic influence in the Norwegian and Barents Seas. Fiskeridirektoratets Skrevne Serie for Havundersøkelser, 17: 161-189.