

4.2. Phytoplankton

Text and figure by Olga Tyukina

Sampling of phytoplankton in 2015

To evaluate species composition and structure characteristics of phytoplankton communities, phytoplankton samples were collected during the BESS survey onboard of Russian research vessel. Totally 126 samples on 42 stations were collected on the oceanographic section “Kola Meridian” and in the north-eastern Barents Sea (Figure 4.2.1).

Samples from three water layers (surface, 5 m upper of pycnocline and near bottom) were collected separately. Volume of samples was 1,5-2 liters. Samples were fixed for further analysis.

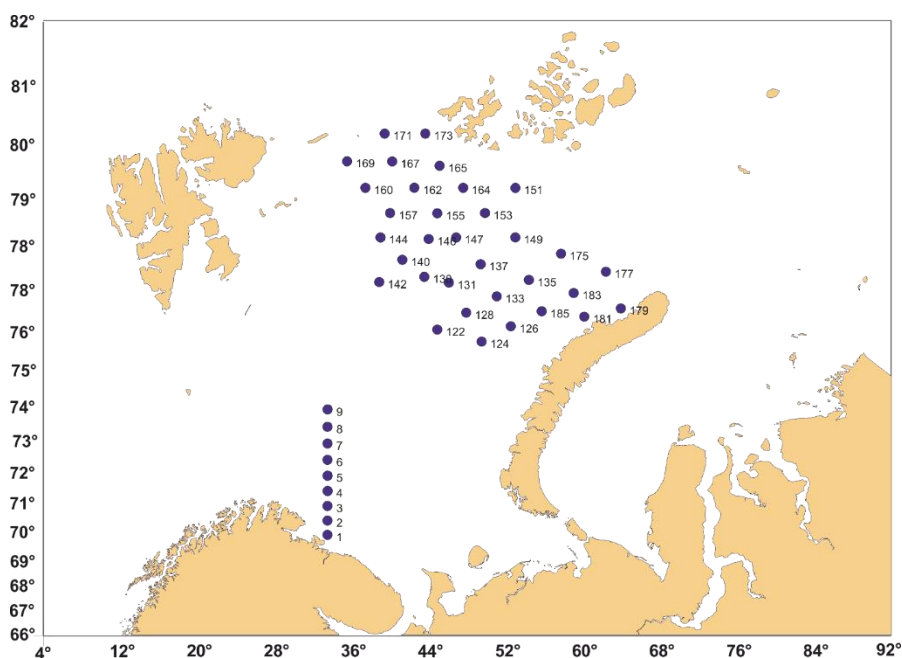


Figure 4.2.1. Location of phytoplankton sampling in BESS 2015 taken by R/V Vilnyus.