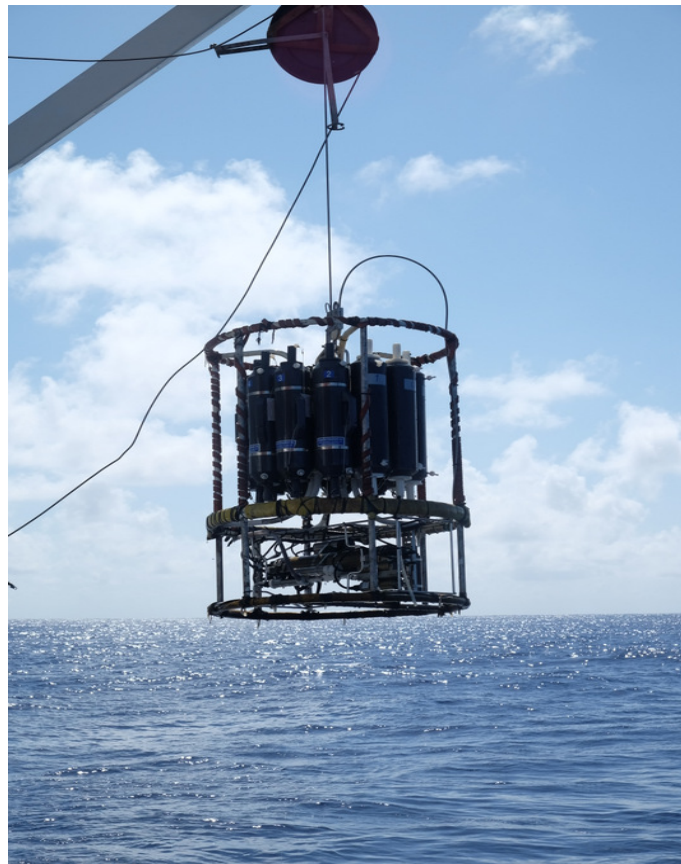

1 HMS

Nothing observed or reported.

2 Activities and comments

The teams collect data in a very professional way and the work at stations is well planned. The different groups use various types of gear to collect data. For the oceanographers, the CTDO sonde is very much in use and is extremely useful. The vessel stops regularly at stations and the sonde is dropped to 2000m depth. On its way down the sonde reads temperature, density, conductivity, and from these data the salinity is calculated. It also reads the oxygen content in the water and the chlorophyll. On the CTD stations, water is also collected in 12 depths using Niskin bottles (see picture). The water is analysed for nutrients, dissolved gasses, chlorophyll, oxigene content and the presence of phytoplankton.



The CTDO-sonde for oceanographic data, "Dr Fridtjof Nansen, 2. July 2015



Sorting samples from the Manta trawl for plastic particles.

3 Weather

Temp 23°C,
Wind: light breeze from east
Waves some

4 Tomorrows schedule

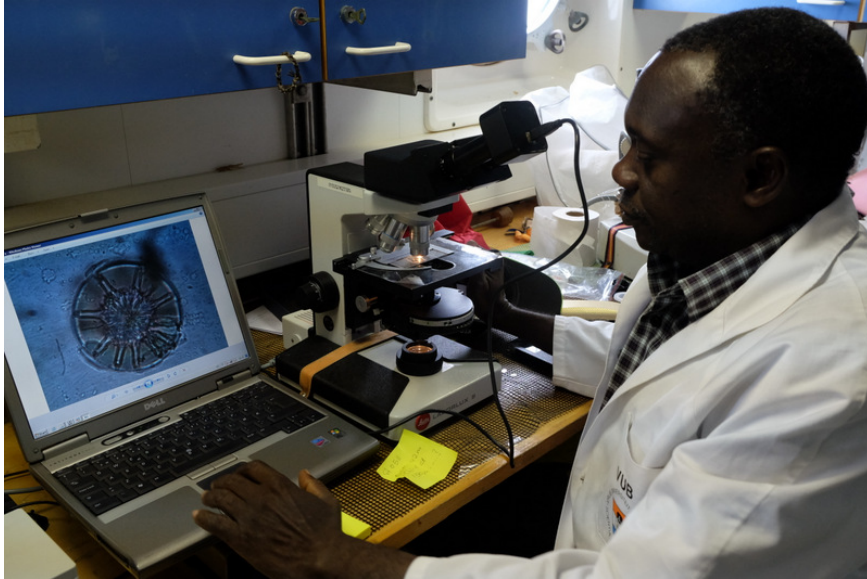
Steaming towards south west, along the 20th degree South. Doing sampling every 150 nautical miles, trawling for mesopelagic fish in between the ecological stations.



*Sorting and determining mesopelagic fish.
Many species which challenging to determine to species.*

5 Prognoses

We plan to do twenty more ecological stations along the westward transect.



Phytoplankton is sampled regularly with a phytoplankton-net. Showing that there is primary production in the high seas.

6 Problems during field work

No problems today.

7 Future plans

We will deploy buoys on the way. These are advanced buoys that collect data in the water column and send them via satellite to a lab.

RT