

6.2 Benthos community

Text by P. Lubin, L. Lindal Jørgensen, D. Zakharov, T. Tankovskaya

Figures by D. Zakharov and P. Krivosheya

6.2.1 Monitoring the Northern shrimp (*Pandalus borealis*)

In 2014, the calculated index (based on method of squares) of the Northern shrimp stock was 303.8 thousand tonnes, which is 21 % lower than in 2013, and 13 % lower than long term mean (Figure 6.2.1.1). Denser concentrations of Northern shrimp were observed in the central and eastern areas and north of Svalbard/Spitsbergen Archipelago, while they were almost disappeared in the southern and western areas. In 2014, the decrease in stock size might be partially explained by lack of coverage in the northern area due to ice condition (see “Background” in the report).

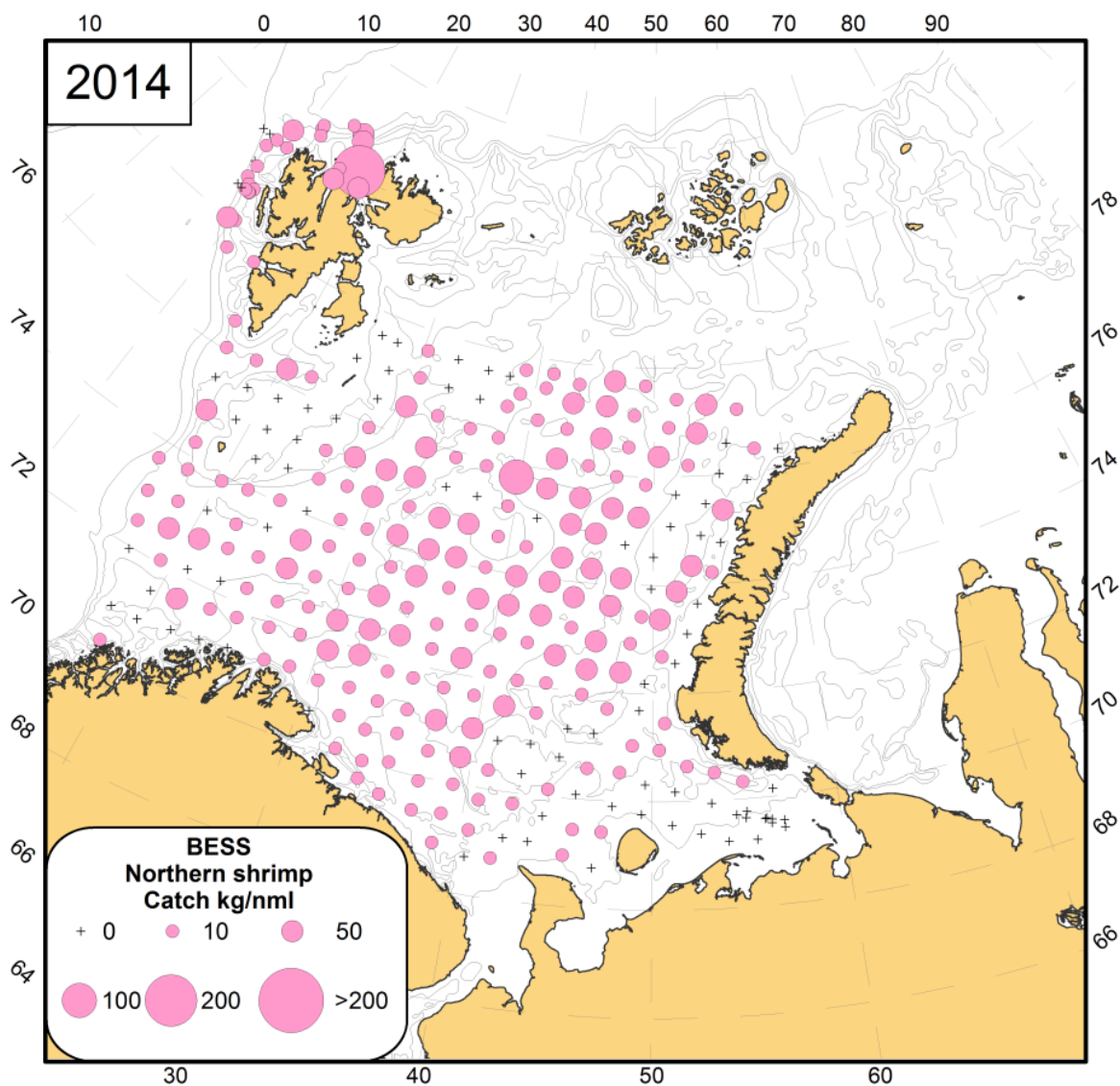


Figure 6.2.1.1 Distribution and biomass (kg/nm) of the Northern shrimp in the Barents Sea, August-October 2014

Evaluation of the relative number of males with a length of carapace 13-17 mm, taken by bottom trawl in the Russian coverage part of ecosystem survey showed that the replenishment was at average level in 2014 and since 2006 (Figure 6.2.1.2).

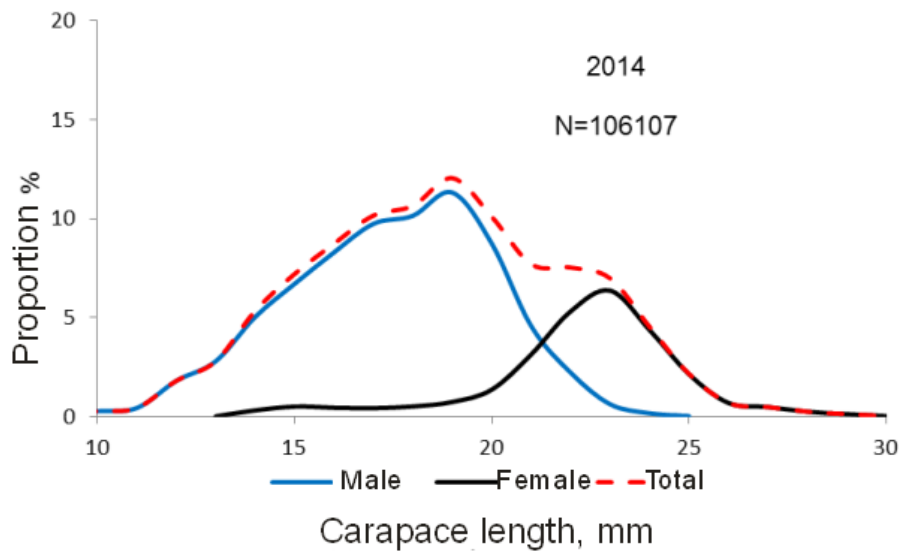


Figure 6.2.1.2 Size and sex structure of the Northern shrimp stock taken by bottom trawl in the area covered by Russian vessel "Vilnius" (see Figure 1.1) in 2014 .