

6.2 Benthos community

Text by P. Lubin, L. Lindal Jørgensen and A. Mashnin

Figures by D. Prozorkevich and P. Lubin

6.2.1 Monitoring the Northern shrimp (*Pandalus borealis*)

Northern shrimp was recorded in 390 of the 493 catches of bottom trawl (Figure 6.2.1.1). The catch of the northern shrimp ranged from 1 g to 102.796 kg. Average catch of northern shrimp was 7.734 ± 0.468 kg. The amount of shrimp in 1 kg was 62-660 individuals. The average sample size was 217 ± 12 individuals per kg.

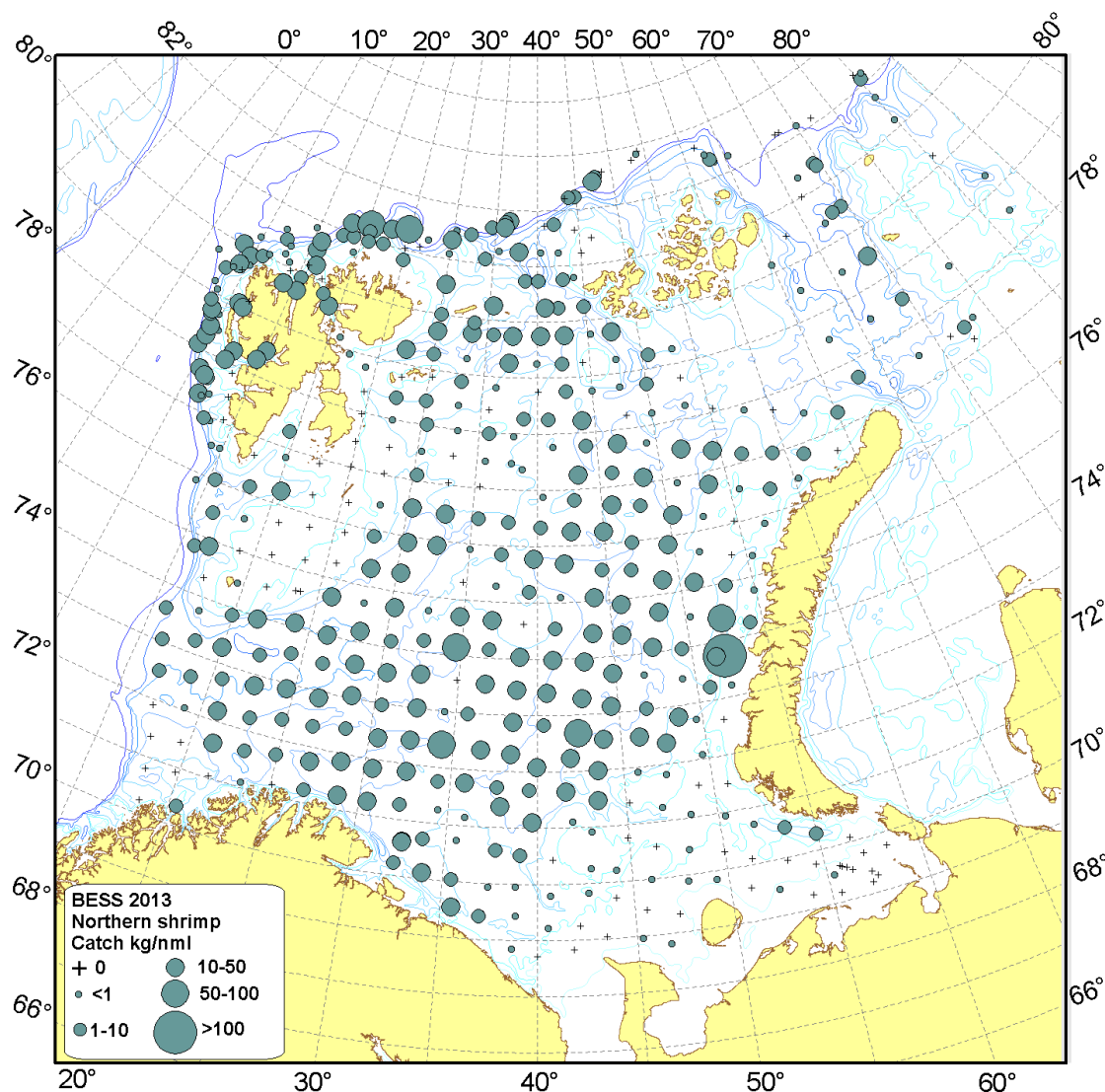


Figure 6.2.1.1 Distribution and the biomass (kg/nml) of the Northern shrimp in the Barents Sea ecosystem survey 2013

Maximum catches of shrimp were recorded at depths of 200 to 400 m. Length of the shrimps carapace ranged from 7 to 31 mm. Size and sex structure of the shrimp in the eastern part of the study area is shown in Figure 6.2.2.2.

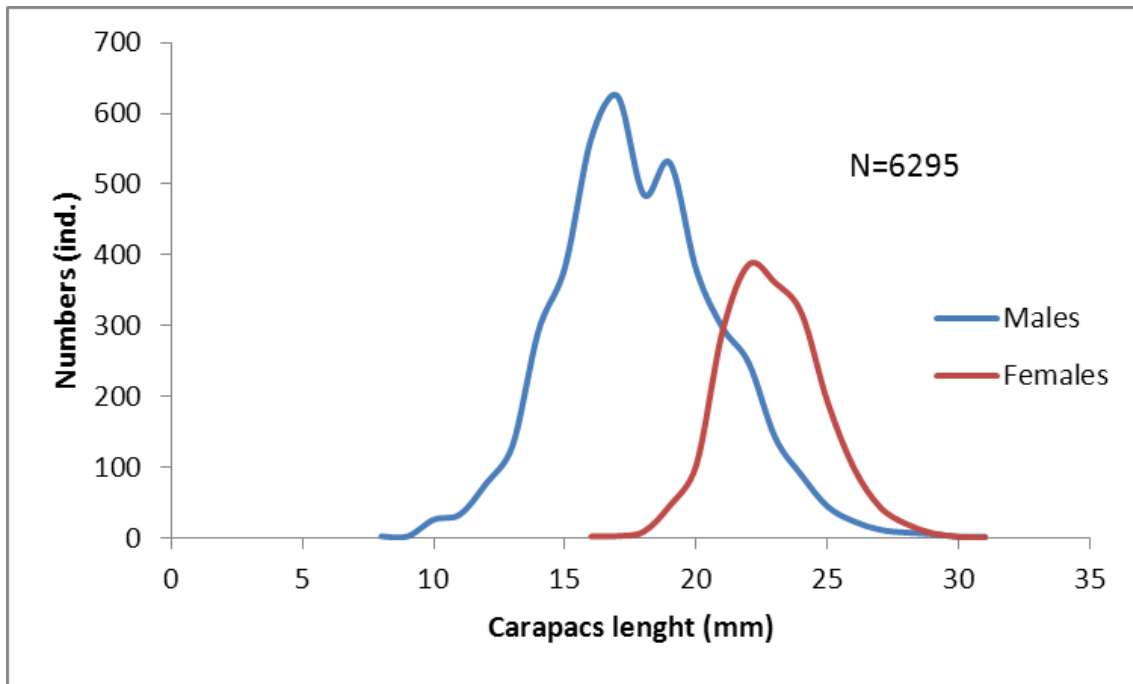


Figure 6.2.2.2 Size and sex structure of catches of the Northern shrimp in the study area.

The dominant part of the northern shrimp population in the study area consisted of males (64%) with a carapace length of 13 to 23 mm (Fig 6.2.2.2). Females which did not participate in spawning, were presented as individuals with a carapace length of 20 mm to 25 mm and made up 12%.

6.2.2 Distribution of the Red King crab (*Paralithodes camtschaticus*)

The red King crab was recorded at 10 stations in the southern part of the Barents Sea for the period of ecosystem survey in 2013. The weight of the catch ranged from 0.570 kg to 343.268 kg (Figure 6.2.2.1). The average trawl catch of king crab was 43 ± 33 kg.

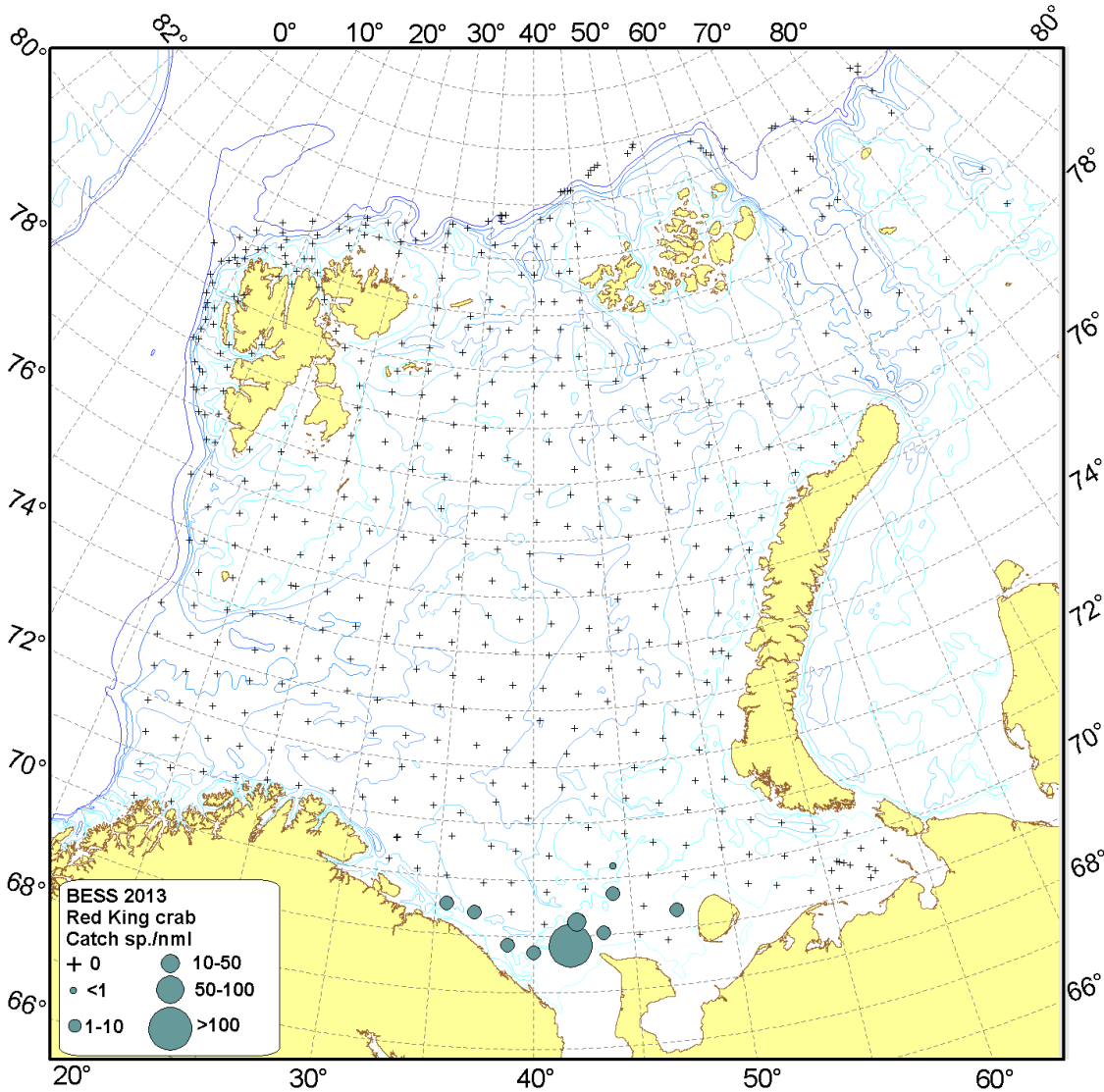


Figure 6.2.2.1 The distribution and number of individuals per nml of the Red King crab in the Barents Sea during the ecosystem survey 2013

6.2.3 Distribution of the Snow crab (*Chionoecetes opilio*)

Snow crab (*Chionoecetes opilio*) was recorded at 131 stations. The biomass of the snow crab catch ranged from 1.5 g to 189.288 kg (Figure. 6.2.3.1). The average catch was 10.06 ± 2.22 kg. The highest amounts of snow crab (2004 individuals in 189.288 kg) was observed on the north west of Novaya Zemlya.

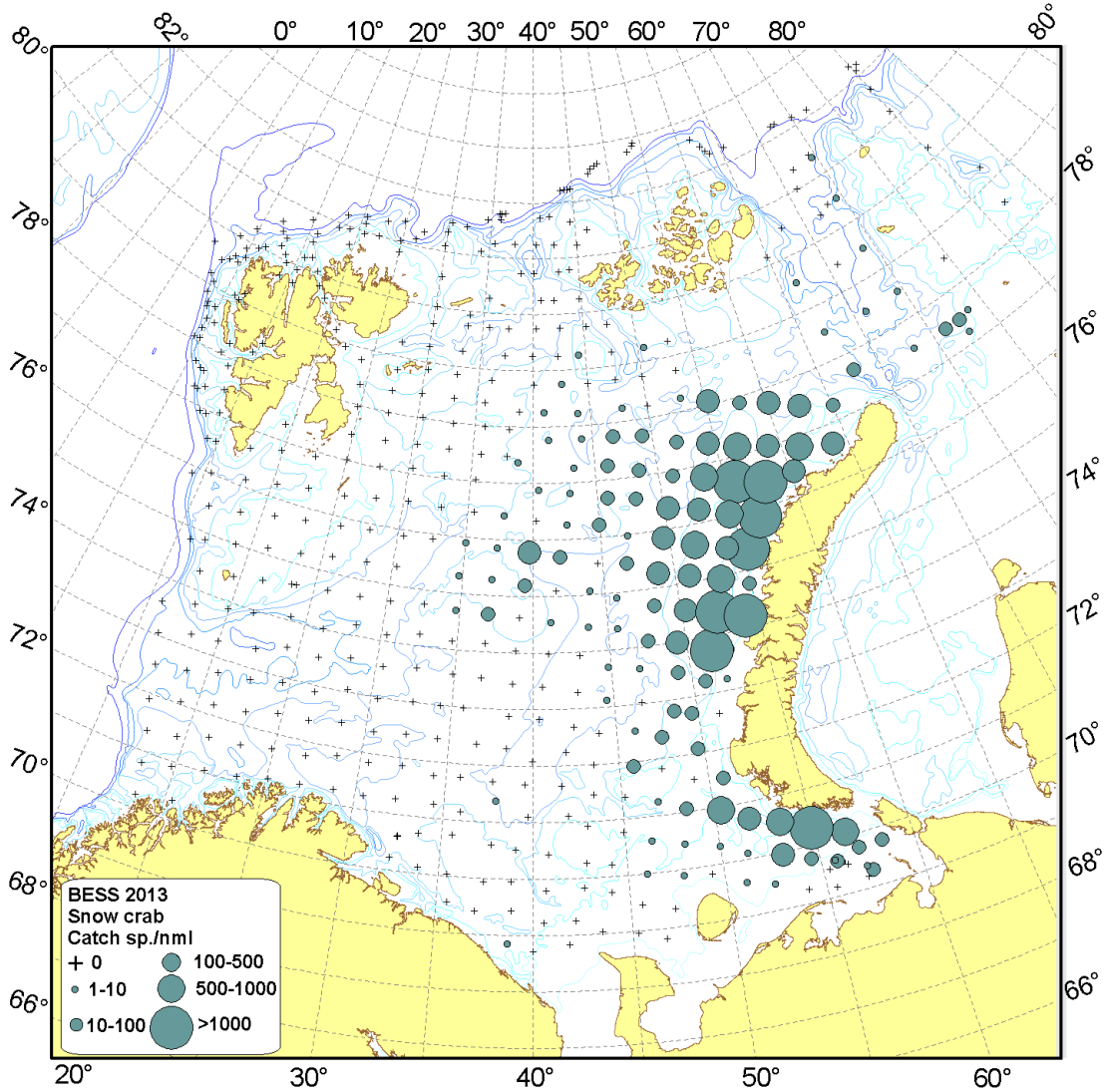


Figure 6.2.3.1 Distribution and numbers of individuals per nml of the Snow crab in the Barents Sea during the ecosystem survey 2013