

Figure 2.4.1. Density distribution of cod, $\text{kg} \cdot \text{hour of trawling}^{-1}$, August - October 2004.

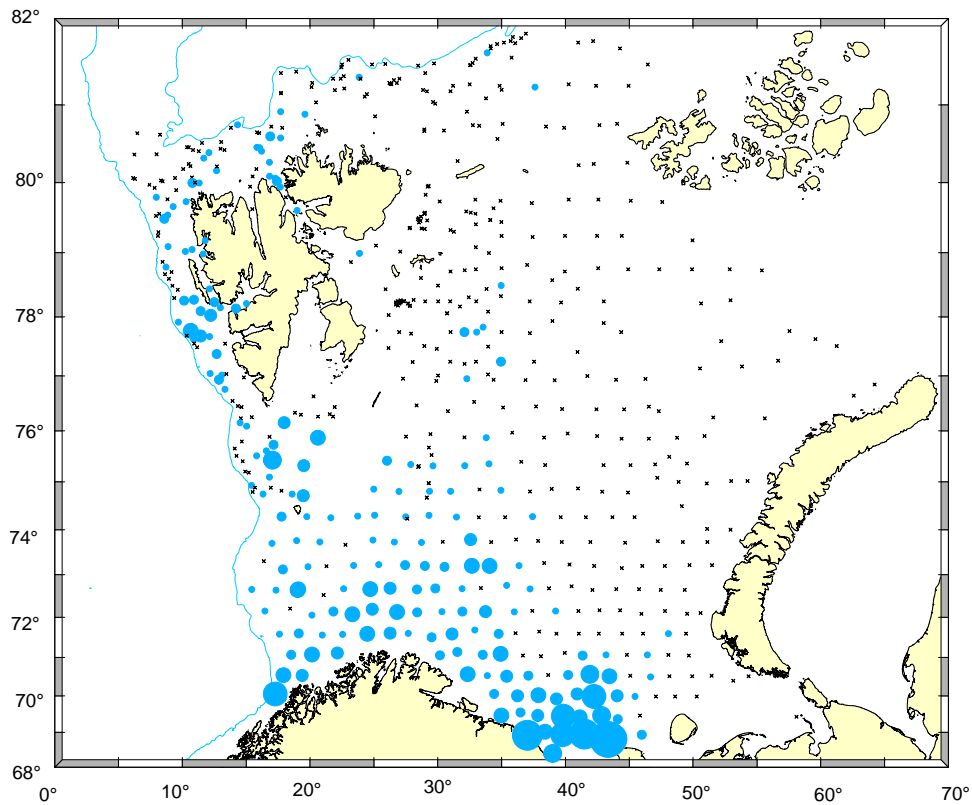


Figure 2.4.2 Density distribution of haddock, $\text{kg} \cdot \text{hour of trawling}^{-1}$, August - October 2004..

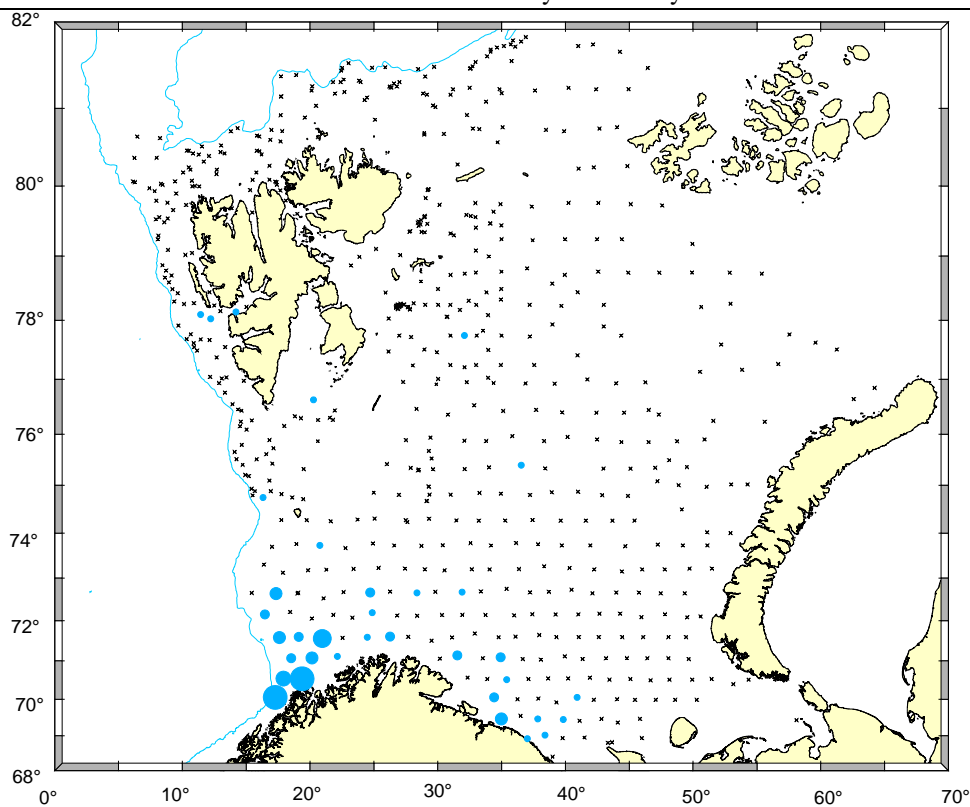


Figure 2.4.3 Density distribution of saithe, $\text{kg} \cdot \text{hour of trawling}^{-1}$, August - October 2004.

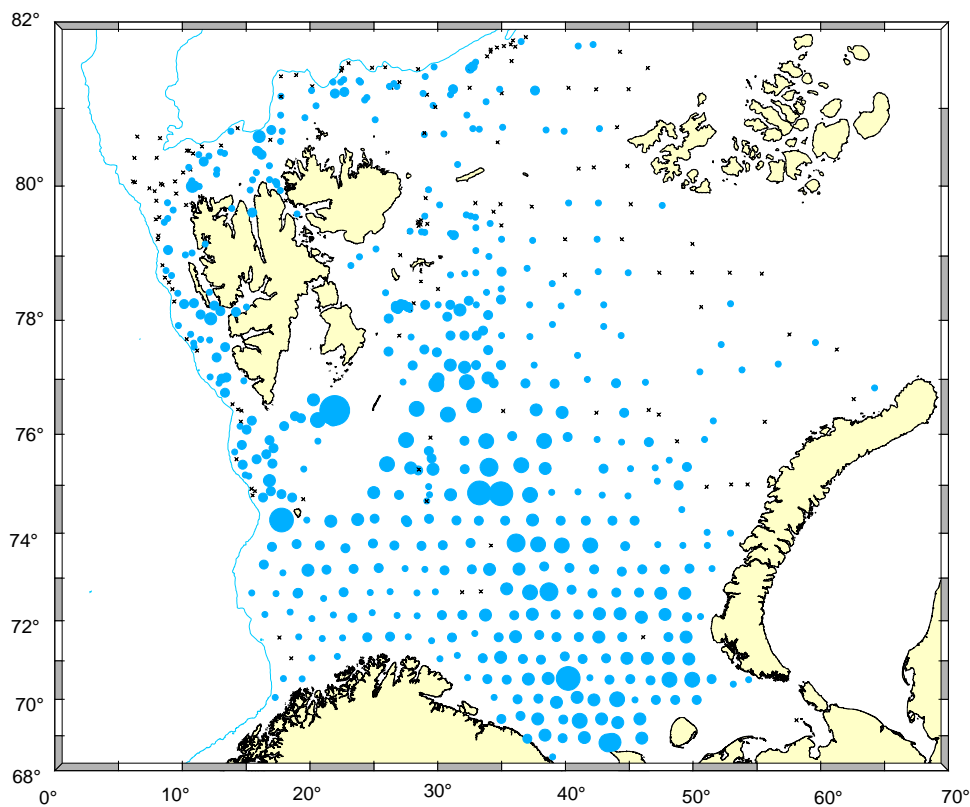


Figure 2.4.4 Density distribution of long rough dab, $\text{kg} \cdot \text{hour of trawling}^{-1}$, August - October 2004.

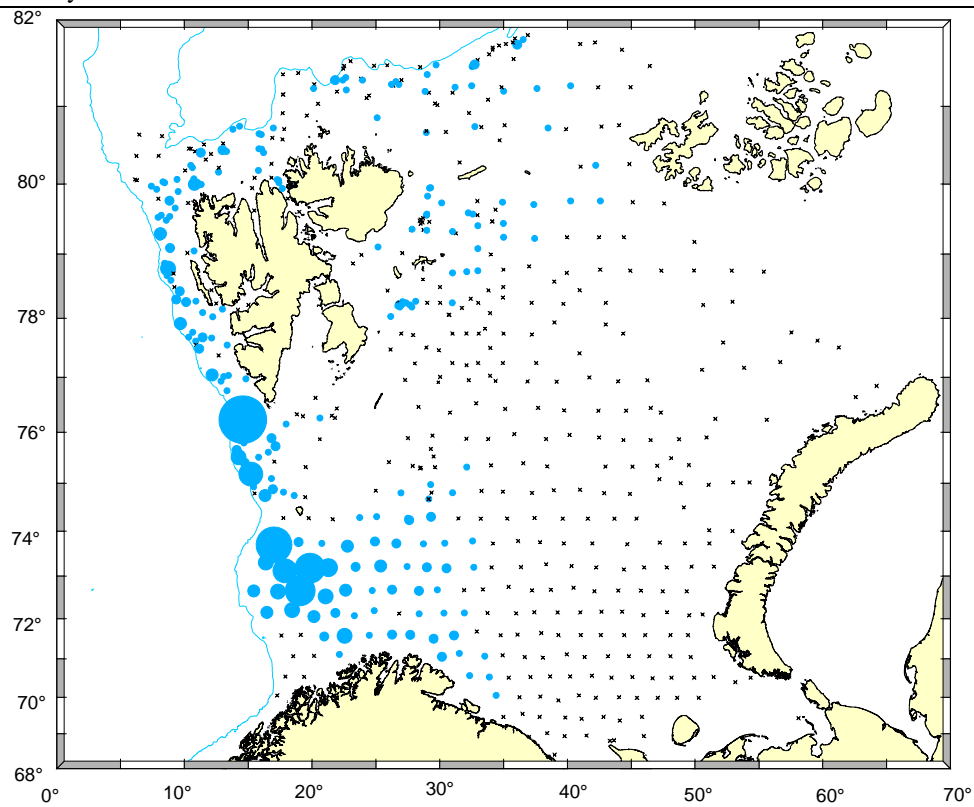


Figure 2.4.5 Density distribution of redfish, $\text{kg} \cdot \text{hour of trawling}^{-1}$, August - October 2004.

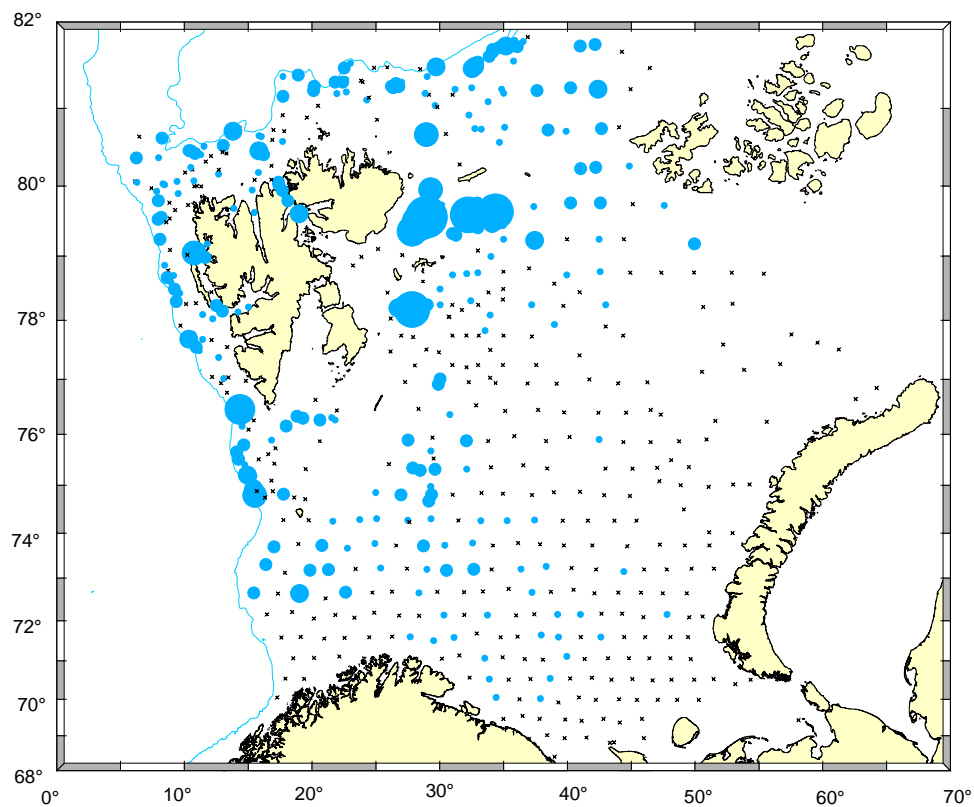


Figure 2.4.6 Density distribution of Greenland halibut, $\text{kg} \cdot \text{hour of trawling}^{-1}$, August - October 2004.

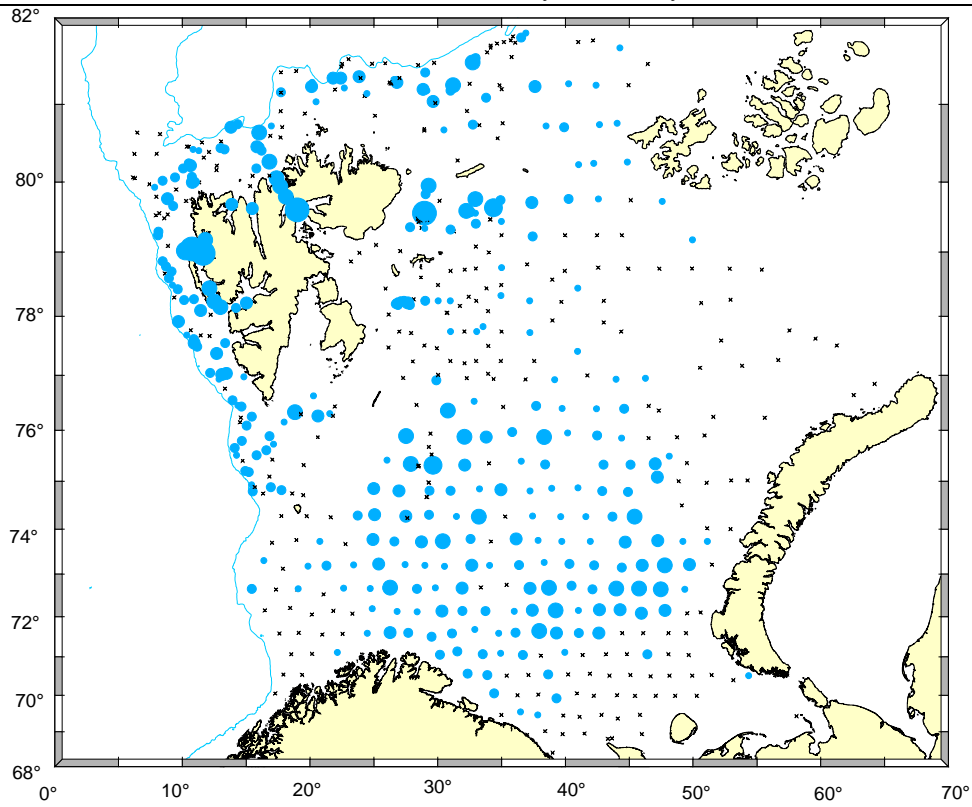


Figure 2.4.7 Density distribution of shrimp, $\text{kg} \cdot \text{hour of trawling}^{-1}$, August - October 2004.

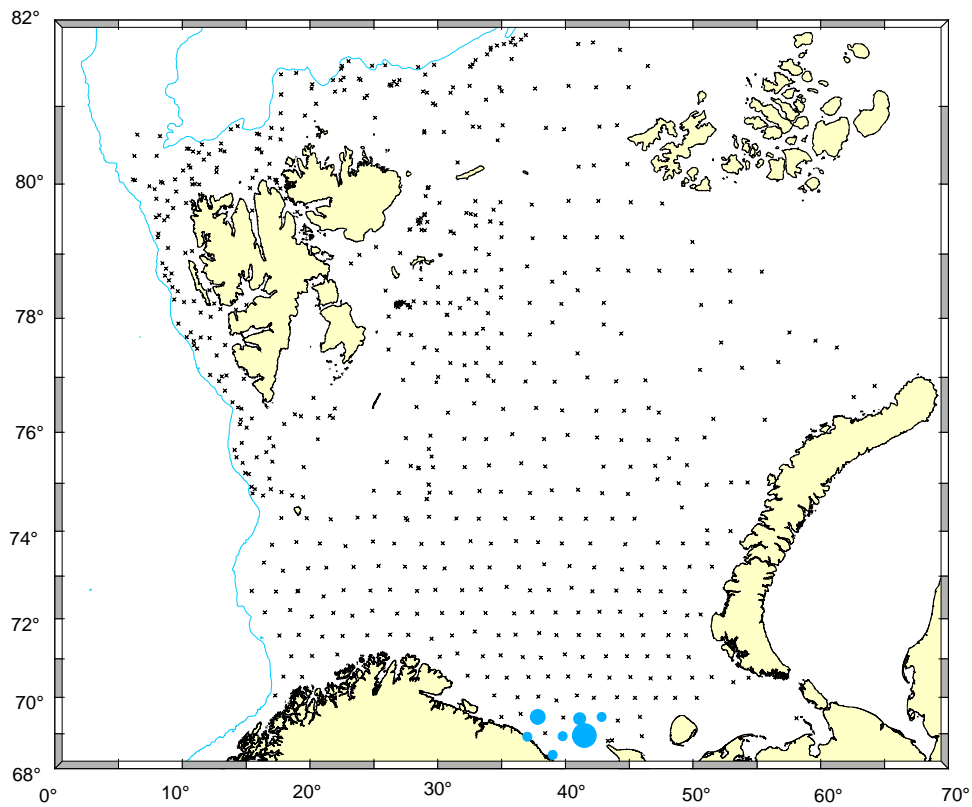


Figure 2.4.8 Density distribution of Kamtshatka crab, $\text{kg} \cdot \text{hour of trawling}^{-1}$, August - October 2004.

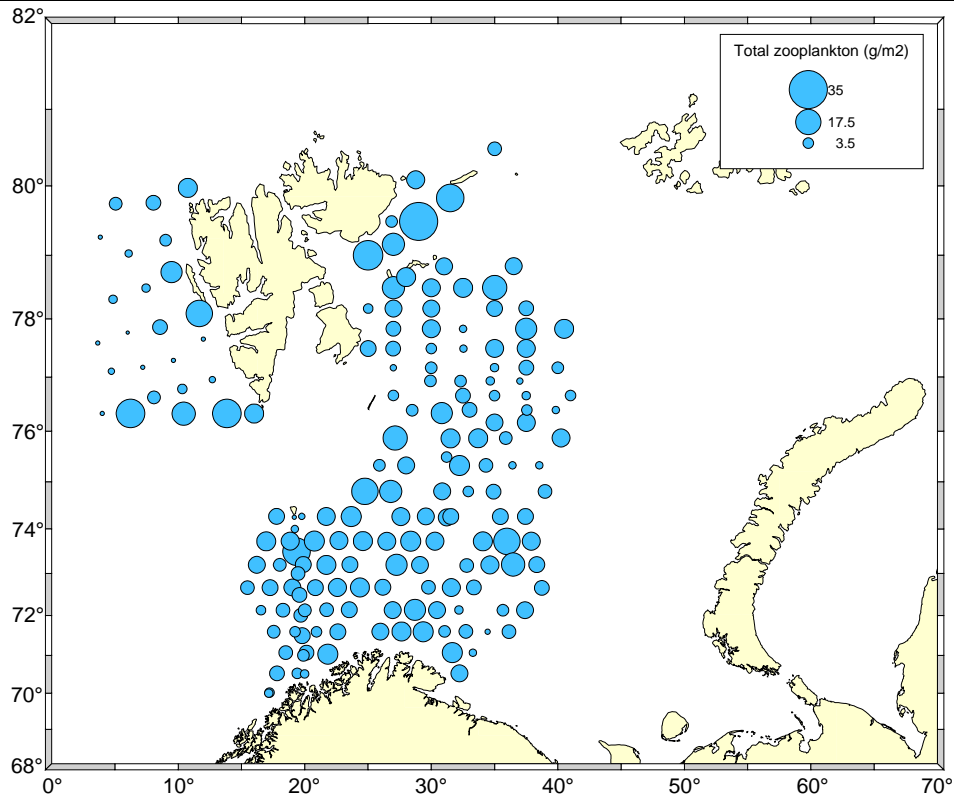


Figure 2.5.1 Distribution of zooplankton (g/m^2), data from “J. Hjort” and “J. Mayen”, August-October 2004.

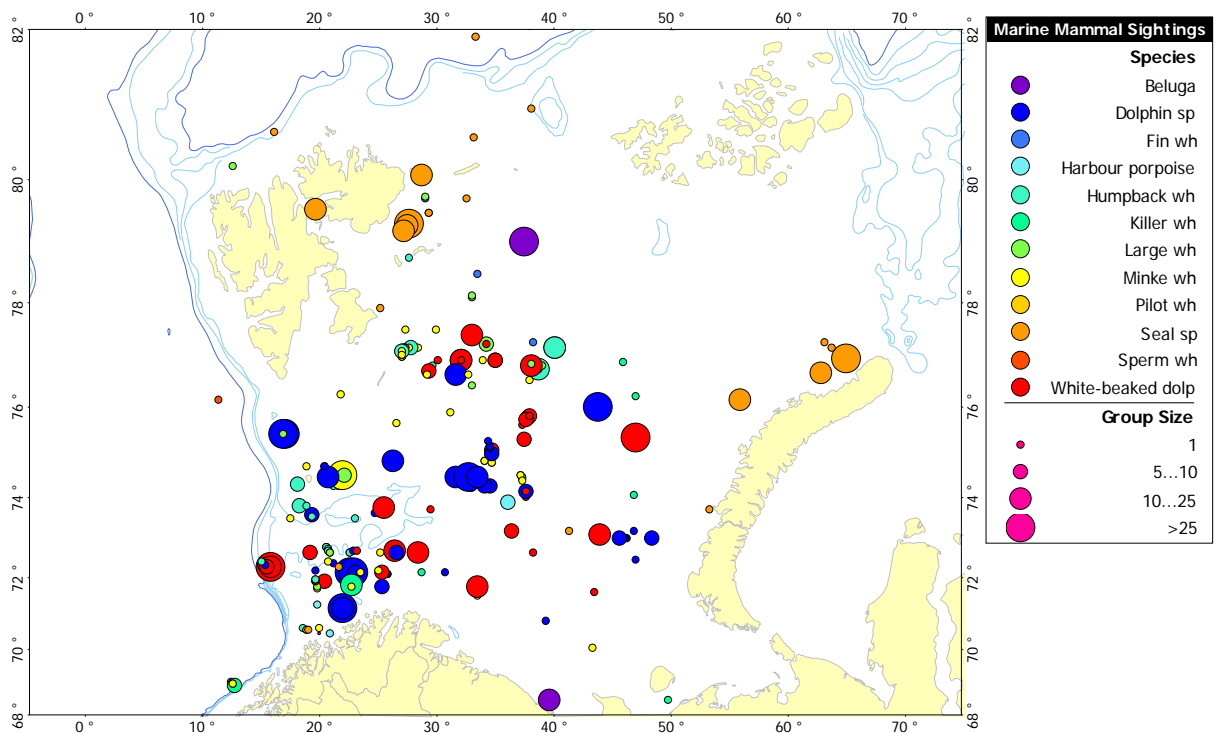


Figure 2.6.1 Distribution of marine mammals, data from “Johan Hjort”, “Smolensk”, “Nansen” and the PINRO airplane Arctica, August - October 2004.

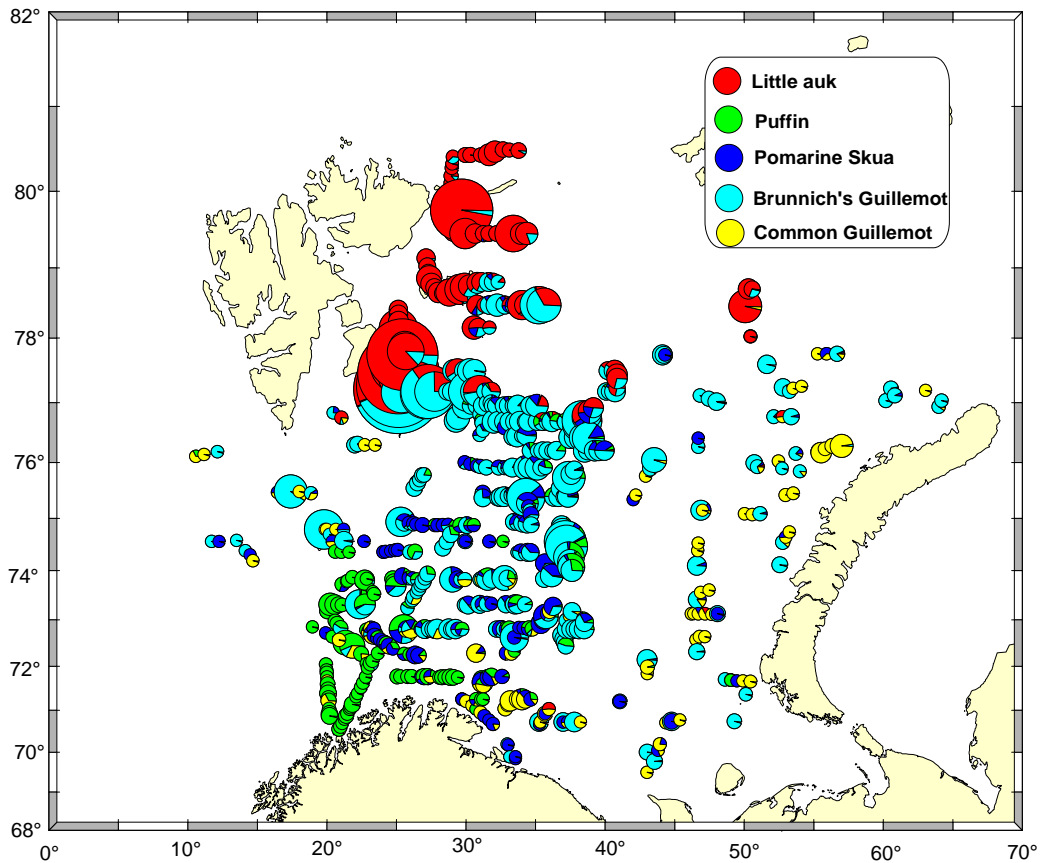


Figure 2.6.2 Observation of sea birds from "F. Nansen" and "J. Hjort" during the period August-October

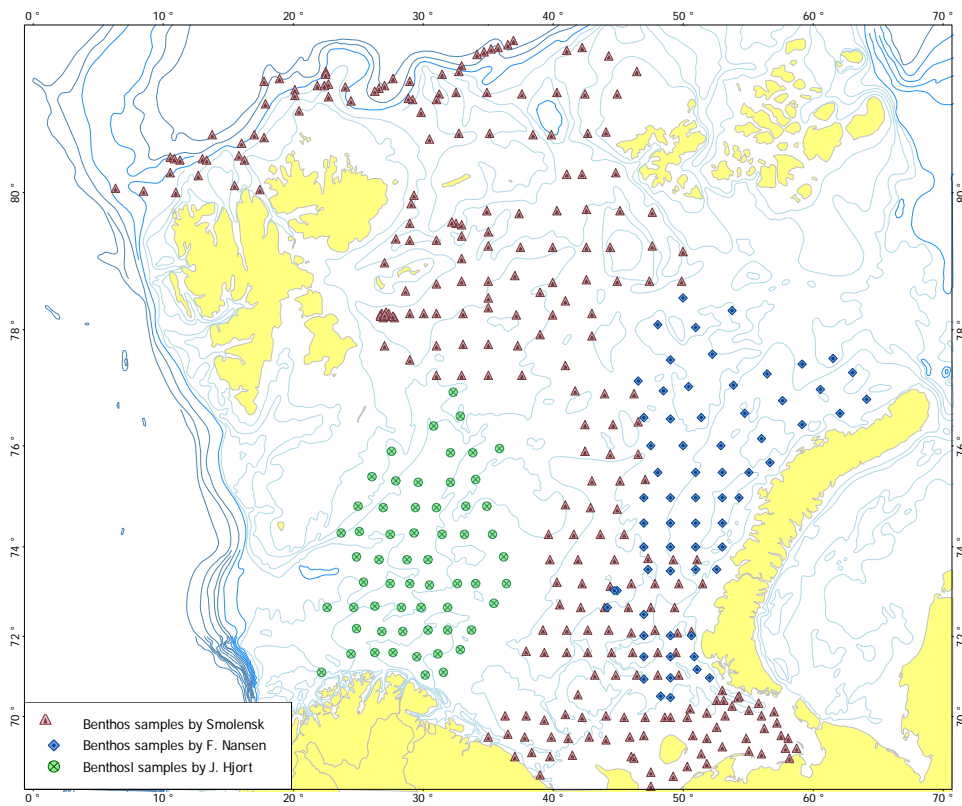


Figure 2.7.1 Map of stations where macro-benthos was sampled during the 2004 ecosystem survey. Samples were made using bottom trawl (RV "J.Hjort"), bottom trawl and grab (RV "Smolensk"), or grab and Sigsby trawl (RV "F. Nansen").