

FACTS

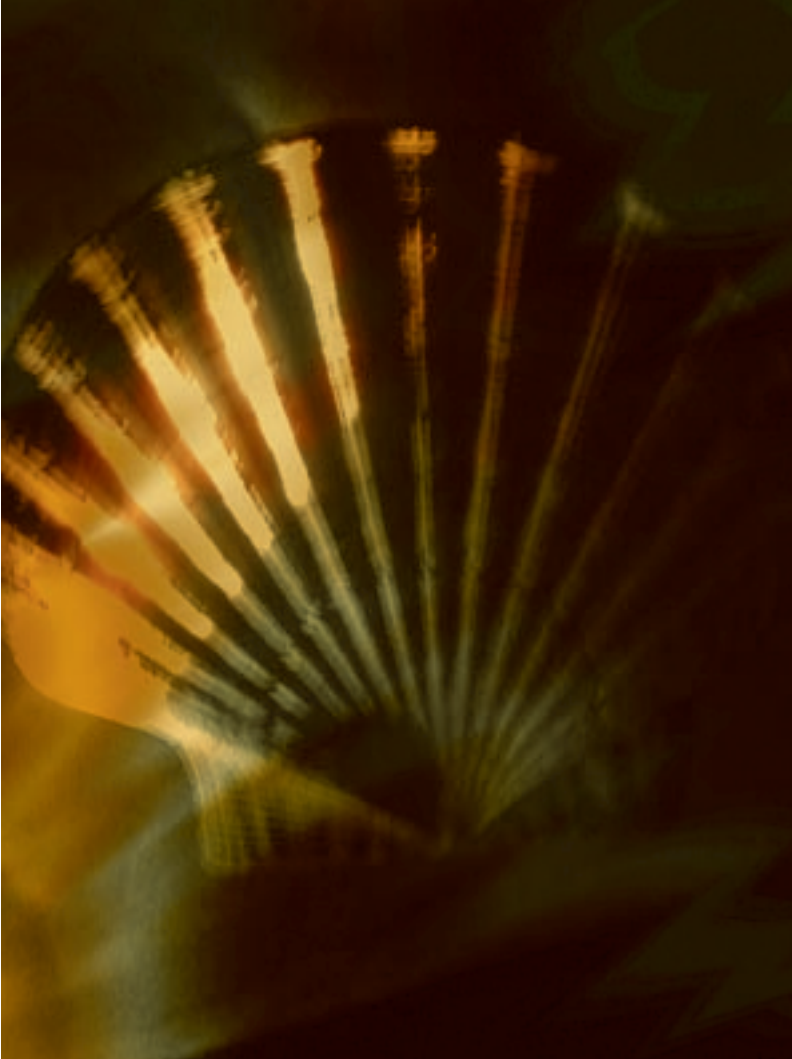
&

FIGURES

2001



INSTITUTE OF MARINE RESEARCH



VISION

The Institute of Marine Research (IMR) aims to be a national and international innovator in marine research and a reputable and reliable source of premises and knowledge.

And as such, the IMR intends to contribute to a responsible utilization of our oceans and coasts as a food source and as a basis for industrial activity and recreation.



MAIN OBJECTIVES

The three core areas of the Institute of Marine Research are; Marine Resources, Marine Environment and Aquaculture. The Institute is at the forefront of international research in these areas, and provides scientific advice to the authorities, industry and society in general. The objectives for the core areas are:

MARINE RESOURCES

To improve our knowledge base of the most important marine species, thus ensuring greater precision in stock assessments, prognoses and advice to fisheries management.

MARINE ENVIRONMENT

To better our understanding of the environmental effects on ecosystems and their significance for environmental and resource management, including the development of methodology for incorporating environmental parameters into stock assessments and prognoses.

AQUACULTURE

To develop knowledge of salmonids, marine species and shellfish, to optimise production, thus ensuring consideration to both industry and society regarding health, environment, food quality and ethics.

SCIENTIFIC PROGRAMS 2001

The activities of the Institute of Marine Research are concentrated into three departments: the Department of Marine Resources, the Department of Marine Environment and the Department of Aquaculture. The work of the Institute is organized in terms of line programs and research programs.

LINE PROGRAMS

The line activities encompass the Institute's advisory tasks, based on knowledge from our own work and contributions from other national and international institutions. These are:

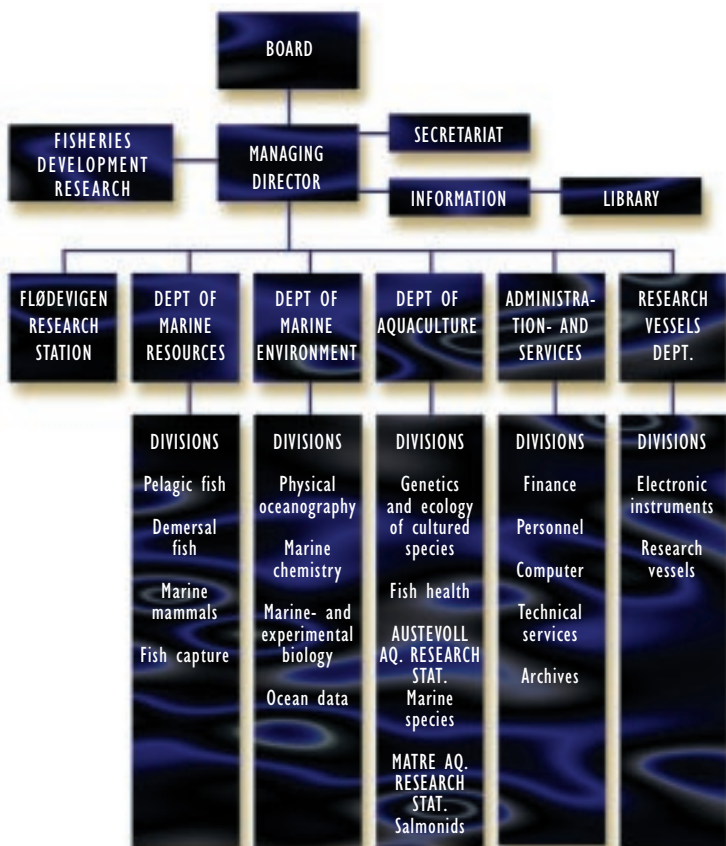
- Resource monitoring and management advice
- Environmental monitoring and condition assessment
- Aquaculture management and advisory
- Development cooperation in fishery research and management

RESEARCH PROGRAMS

The research is organized into interdisciplinary programs. The programs will acquire new knowledge and methods for use in advisory activities. These are:

- Resources and environment in the coastal zone
- Ecosystem Nordic Seas – *Mare cognitum*
- Population dynamics and modelling
- Absolute abundance estimation of marine resources
- Responsible fish capture
- On-growth and harvest quality in fish
- Biological diversity of the marine environment
- Climate and fish
- Reproduction and early life history of fish and shellfish
- Ocean environment quality
- Health of fish and shellfish

ORGANIZATION CHART



LOCATION



STAFF

MAN-YEARS 2000 (PERMANENT AND CONTRACTS OF UP TO FOUR-YEARS)

Category	Aquaculture	Environment	Resource	Flødevigen
Scientists	40,4	39,3	36,1	9,0
Technicians	40,2	27,5	54,4	13,3
Crew				
Administration	9,8	4,7	8,0	2,0
SUM	90,4	71,5	98,5	24,3

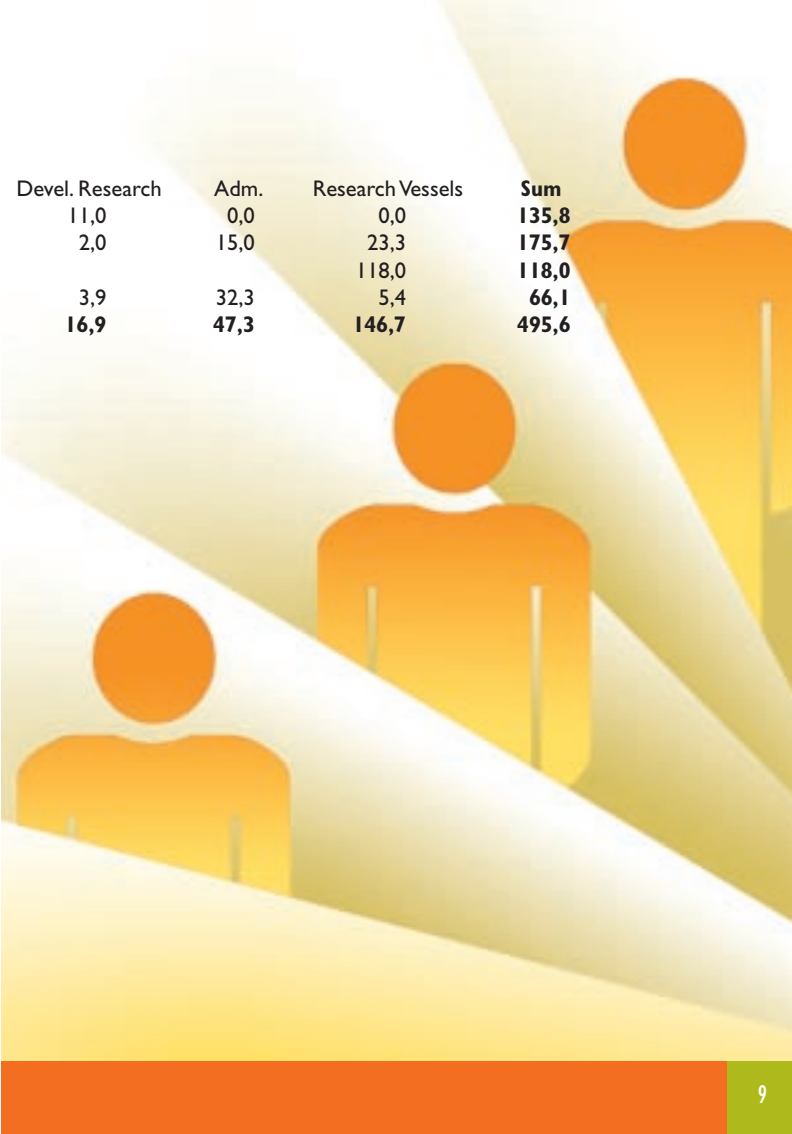
These calculations do not include professors, research fellows, apprentices and cleaning personnel. Research managers are listed as administrative staff.

DOCTORATES IN TOTAL, 2000

Dept. of Marine Resources	25
Dept. of Marine Environment	16
Dept. of Aquaculture	25
Flødevigen Research Station	3
Fisheries Development Research	1
Sum	70

OTHER POSITIONS, 2000

Research fellows	25,2
Postdoctoral positions	2,1
Director of Research II	1,1
Cleaning personel	5,5
Apprentices	10,7
Labour market positions	3,3
Sum	47,9

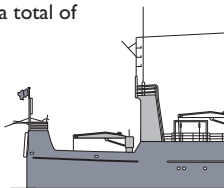


Devel. Research	Adm.	Research Vessels	Sum
11,0	0,0	0,0	135,8
2,0	15,0	23,3	175,7
		118,0	118,0
3,9	32,3	5,4	66,1
16,9	47,3	146,7	495,6

CRUISES

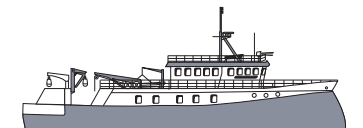
The Institute of Marine Research owns four research vessels. In addition, it is responsible for the operation of a vessel owned by NORAD (the Norwegian Agency for Development Cooperation), which operates off the west coast of Africa.

The Institute also operates the vessel "Håkon Mosby" that is owned by the University of Bergen. The research vessels are the prime tools for gathering resource and environmental, data and in the year 2000 the four largest vessels journeyed a total of 181.000 nautical miles.



G.M. DANNEVIG

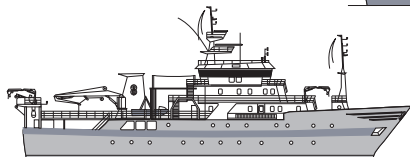
Built: 1979 27,85 m 171 brt.

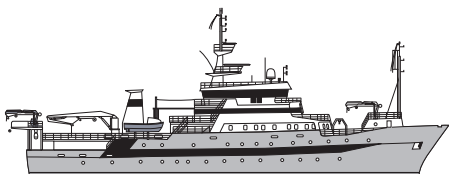


DR. FRIDTJOF NANSEN

Built: 1993 56,75 m 1450 brt.

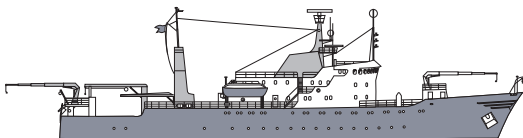
NORAD's vessel — operated by the Institute





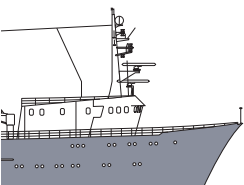
JOHAN HJORT

Built: 1990 64,4 m 910 brt.



G.O. SARS

Built: 1970 70 m 1446 brt.



MICHAEL SARS

Built: 1978/79

47,5 m 493 brt.

CRUISE SUMMARY

The table below shows the number of cruises for the year 2000, this is divided into self-owned and rented vessels. Person-cruise days are cruise days multiplied by the number of scientific personnel attending.

Vessels	Cruise days	Person-cruise days
G.O. Sars	266	2 095
Johan Hjort	274	2 005
Michael Sars	311	1 833
G.M. Dannevig	117	397
Fangst	137	335
Dr. Fridtjof Nansen	324	1 362
Rented vessels	1 126	1 888
Sum	2 555	9 915

COOPERATION PARTNERS

Most Norwegian fisheries are based on stocks shared with other countries, and most ocean environment-related problems are of an international nature. The Institute is an important advisor to international organizations and commissions. To ensure reliable knowledge of international recognition, the Institute of Marine Research collaborates with several central partners:

NATIONAL

The Ministry of Fisheries
The Directorate of Fisheries
The Institute of Nutrition

The Ministry of Environment
DN The Directorate for
Nature Management
SFT The State Pollution
Control Authority

The Ministry of Foreign Affairs

The Research Council of Norway

UNIVERSITIES AND SCIENTIFIC COLLEGES

UiB The University of Bergen

UiTø The University of Tromsø
The Norwegian
College of Fisheries

UiO The University of Oslo

NTNU The Norwegian
University of Science
and Technology

NLH The Norwegian College
of Agriculture

NVH The Norwegian College
of Veterinary Medicine

RESEARCH INSTITUTES

**The Norwegian Institute
of Fisheries and Aquaculture**

The National Veterinary Institute

AQUA RESEARCH

DNMI The Norwegian
Meteorological Institute

NP The Norwegian Polar Institute

NINA The Norwegian Institute
for Nature Research

NIVA The Norwegian Institute
for Water Research

SINTEF The Foundation for Industrial
and Technical Research

OCEANOR The Oceanographic Company
of Norway ASA

NERSC The Nansen Environmental
and Remote Sensing Center



INTERNATIONAL

- ICES** The International Council
for the Exploration of the Sea
- NAFO** The Northwest Atlantic Fisheries Organization
- NEAFC** The Northeast Atlantic Fisheries Commission
- NASCO** The North Atlantic Salmon Conservation Organization
- NAMMCO** The North Atlantic Marine Mammals
Conservation Organization
- IWC** The International Whaling Commission
- CCAMLR** The Commission for the Conservation of Antarctic
Marine Living Resources

The Nordic Council of Ministers

- FAO** The United Nations Food and Agriculture Organization

The EU's Framework Research Programmes

- PINRO** The Russian Polar Marine Research Institute
- MRI** The Icelandic Marine Research Institute
- DFU** The Danish Institute for Fisheries Research
- MARLAB** The Scottish Marine Research Laboratory

ECONOMY

More than half of the Institute's funding comes directly from the Ministry of Fisheries. NORAD, the Research Council of Norway and the EU also commission research. The balance between income and expenses forms the sum set aside for next year's holiday pay and payroll tax in addition to transferred project funds.

INCOME 2000 (in 1.000 NOK)

Ministry of Fisheries, management	225 473
Ministry of Fisheries, investment	45 000
Other income	35 050
Various assignments	10 174
Other Governmental income	11 223
NORAD	54 072
Fishing income	23 397
Research Council of Norway	52 112
EU	11 900
Other private	6 712
TOTAL INCOME	475 113

EXPENSES 2000 (in 1.000 NOK)

Administration	38 240
Wages/holiday pay	12 332
Rent	14 152
Dept. of Marine Resources	57 166
Dept. of Marine Environment	40 158
Dept. of Aquaculture	61 933
Flødevigen Research Station	13 171
Fisheries Development Research	25 030
Research Vessels Dept.	84 006
Resource/fishing surveys	25 098
Rented vessels	35 243
Water pipe Austevoll	5 189
New vessel	35 854
TOTAL EXPENSES	447 572

**INSTITUTE OF
MARINE RESEARCH**

Nordnesgaten 50
P.O. Box 1870 Nordnes
N-5817 Bergen - Norway
Tel: +47 55 23 85 00
Fax: +47 55 23 85 31
E-mail:
havforskningsinstituttet@imr.no

RESEARCH DEPARTMENTS:

**DEPARTMENT OF
MARINE RESOURCES**

Tel: +47 55 23 86 50
Fax: +47 55 23 86 87

**DEPARTMENT OF
MARINE ENVIRONMENT**

Tel: +47 55 23 84 96
Fax: +47 55 23 85 84

**DEPARTMENT OF
AQUACULTURE**

Tel: +47 55 23 63 50
Fax: +47 55 23 63 79

**FISHERIES DEVELOPMENT
RESEARCH**

Tel: +47 55 23 85 69
Fax: +47 55 23 85 79

RESEARCH STATIONS:

**FLØDEVIGEN
RESEARCH STATION**

N-4817 His - Norway
Tel: +47 37 05 90 00
Fax: +47 37 05 90 01

**AUSTEVOLL AQUACULTURE
RESEARCH STATION**

N-5392 Storebø - Norway
Tel: +47 56 18 03 42
Fax: +47 56 18 03 98

**MATRE AQUACULTURE
RESEARCH STATION**

N-5984 Matredal - Norway
Tel: +47 56 36 60 40
Fax: +47 56 36 61 43

**INSTITUTE OF MARINE
RESEARCH - INFORMATION**

Tel: +47 55 23 85 21
Tel: +47 55 23 85 16
Fax: +47 55 23 85 86
E-mail: informasjonen@imr.no

RESEARCH VESSELS DEPT.

Tel: +47 55 23 85 35
Fax: +47 55 23 85 32



www.imr.no